



KASHI INSTITUTE OF PHARMACY

Managed by: JAIN EDUCATION SOCIETY

E-mail: info@kashiit.ac.in Website: <https://kashiip.ac.in> 1800-123-321-123

FEEDBACK COMMITTEE REPORT 2022-23

S.N.	STEKEHOLDERS	TOTAL NUMBER OF RECORDED FEEDBACK
1	STUDENTS FEEDBACK	225
2	FACULTY FEEDBACK	19
3	ALUMNI FEEDBACK	29
4	EMPLOYER FEEDBACK	8





KASHI INSTITUTE OF PHARMACY

Managed by: JAIN EDUCATION SOCIETY

E-mail: info@kashiit.ac.in Website: <https://kashiip.ac.in> 1800-123-321-123

TABULAR ANALYSIS OF STUDENTS FEEDBACK RESPONSE 2022-23

A. Academic Performance		1	2	3	4	5	TOTAL
1	Rate the relevance of study structure in context of present industry needs.	72	15	0	0	0	87
2	Rate the synchronization between theory and lab courses in study curriculum.	43	44	0	0	0	87
3	Rate the weightage allocated and length of course syllabus.	49	37	1	0	0	87
4	How you rate the importance and usefulness of value - added course.	49	37	1	0	0	87
5	Rate the pliability in the selection of elective subject in course curriculum.	62	25	0	0	0	87
B. Feedback on Teaching, Learning and Assessment		TOTAL	275	158	2	0	435
1	Rate the employment of ICT and teaching skills used in curriculum plan.	45	42	0	0	0	87
2	Rate the completeness of syllabus in the class and its effectiveness.	41	46	0	0	0	87
3	Rate the availability of e study materials and notes of subjects in students LMS.	53	32	2	0	0	87
4	Rate the future viewpoint of for self learning, student centric and oriented learning and activity based learning.	44	41	2	0	0	87
5	Rate the effectiveness and activity based learning on assessment process.	56	31	0	0	0	87
C. Feedback on Facilities and Infrastructure		TOTAL	239	192	4	0	435
1	Rate the level of education and study atmosphere in college campus.	55	31	1	0	0	87
2	Give the scores according to the level of hygiene and food provided in college canteen and mess.	47	39	1	0	0	87
3	Rate the college's library, sitting arrangements, availability of books and journals.	53	34	0	0	0	87
4	Rate your consent level with respect to internet bandwidth and infrastructure.	51	36	0	0	0	87
5	Rate your satisfaction with the availability of glasswares and other items in institute laboratory.	45	39	3	0	0	87
6	Rate your consent level with respect to safety within institute campus and security level.	45	39	3	0	0	87
7	Rate your satisfaction level with respect to first aid availability and disaster management.	54	31	2	0	0	87
8	Rate your satisfaction level in the respect of safety and security of all students within and outside campus.	46	41	0	0	0	87
9	Rate your satisfaction level with respect to bus or van transportation facilities.	64	23	0	0	0	87
#	Rate your satisfaction level with respect to good and hygienic drinking water system in college premises.	47	37	2	0	0	86
TOTAL		507	350	12	0	0	869
SUM TOTAL		1021	700	18	0	0	1739

NOTE

- 1 = EXCELLANT
- 2 = BEST
- 3 = GOOD
- 4 = AVERAGE
- 5 = POOR





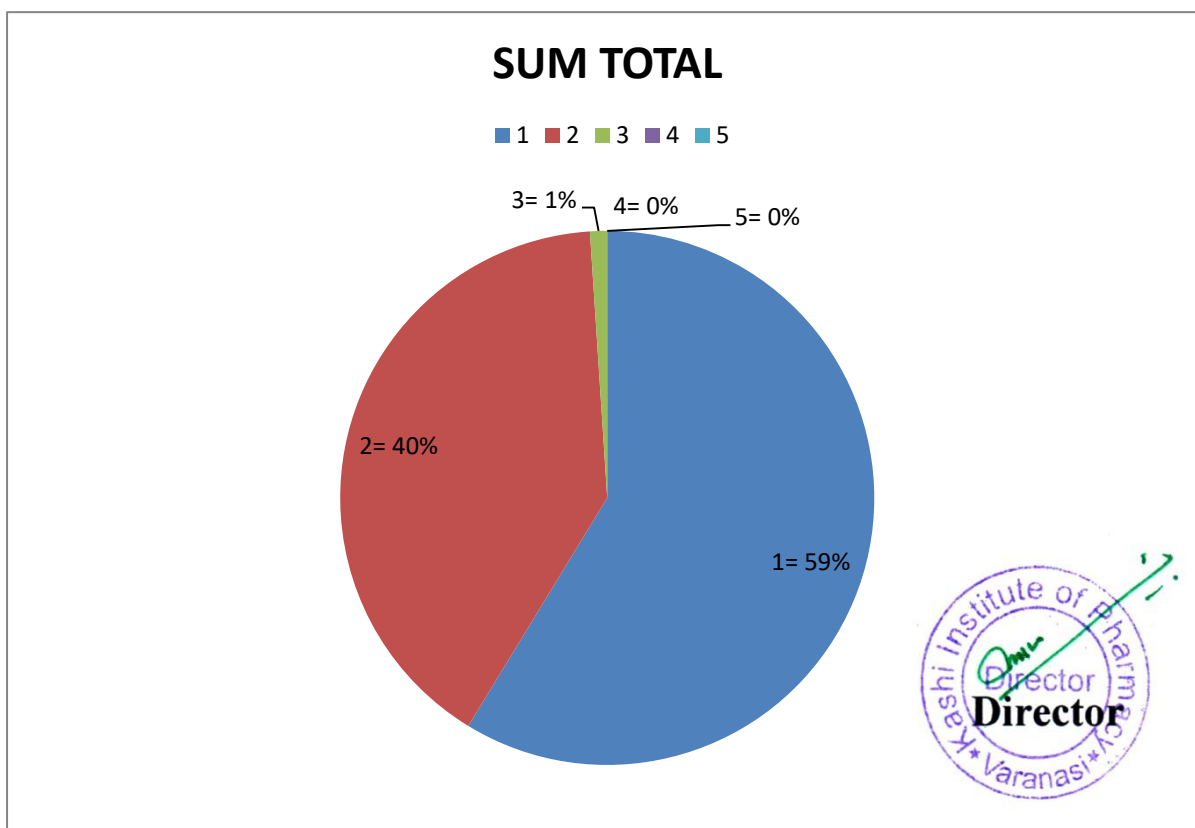
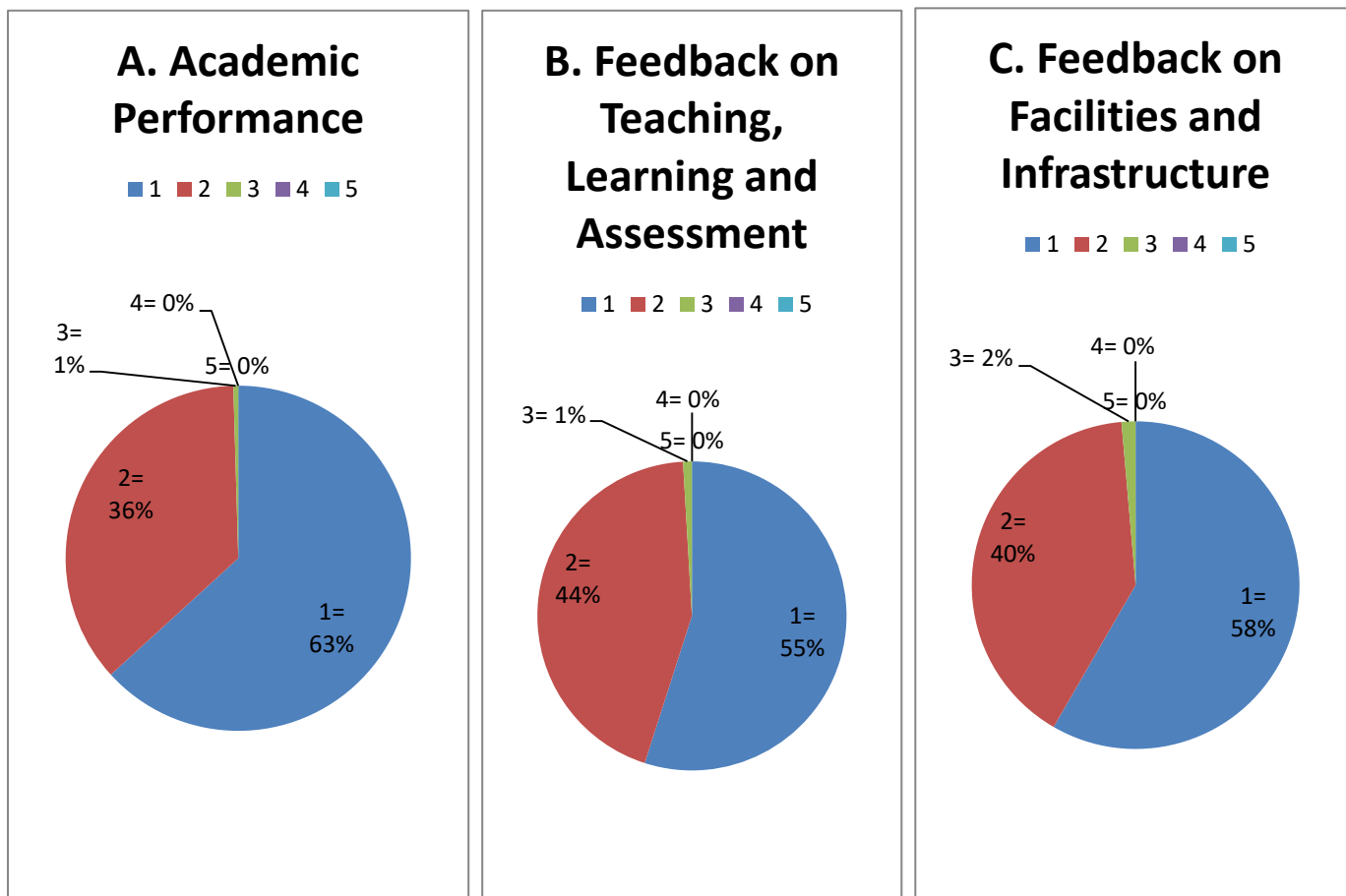
KASHI INSTITUTE OF PHARMACY

Managed by: JAIN EDUCATION SOCIETY

E-mail: info@kashiit.ac.in Website: <https://kashiip.ac.in>

1800-123-321-123

GRAPHICAL ANALYSIS OF STUDENTS FEEDBACK RESPONSE 2022-23





KASHI INSTITUTE OF PHARMACY

Managed by: JAIN EDUCATION SOCIETY

E-mail: info@kashiit.ac.in Website: <https://kashiip.ac.in> 1800-123-321-123

TABULAR ANALYSIS OF STUDENTS FEEDBACK RESPONSE 2022-23

A. Academic Performance		1	2	3	4	5	TOTAL	
1	Rate the relevance of study structure in context of present industry needs.	58	14	1	0	0	73	
2	Rate the synchronization between theory and lab courses in study curriculum.	32	39	2	0	0	73	
3	Rate the weightage allocated and length of course syllabus.	42	26	5	0	0	73	
4	How you rate the importance and usefulness of value - added course.	38	33	2	0	0	73	
5	Rate the pliability in the selection of elective subject in course curriculum.	47	23	3	0	0	73	
B. Feedback on Teaching, Learning and Assessment		TOTAL	217	135	13	0	0	365
1	Rate the employment of ICT and teaching skills used in curriculum plan.	45	24	4	0	0	73	
2	Rate the completeness of syllabus in the class and its effectiveness.	41	30	2	0	0	73	
3	Rate the availability of e study materials and notes of subjects in students LMS.	46	24	3	0	0	73	
4	Rate the future viewpoint of for self learning, student centric and oriented learning and activity based learning.	42	30	1	0	0	73	
5	Rate the effectiveness and activity based learning on assessment process.	38	32	3	0	0	73	
C. Feedback on Facilities and Infrastructure		TOTAL	212	140	13	0	0	365
1	Rate the level of education and study atmosphere in college campus.	46	23	4	0	0	73	
2	Give the scores according to the level of hygiene and food provided in college canteen and mess.	33	35	5	0	0	73	
3	Rate the college's library, sitting arrangements, availability of books and journals.	46	24	3	0	0	73	
4	Rate your consent level with respect to internet bandwidth and infrastructure.	44	26	3	0	0	73	
5	Rate your satisfaction with the availability of glasswares and other items in institute laboratory.	42	26	4	0	0	72	
6	Rate your consent level with respect to safety within institute campus and security level.	41	31	1	0	0	73	
7	Rate your satisfaction level with respect to first aid availability and disaster management.	44	28	1	0	0	73	
8	Rate your satisfaction level in the respect of safety and security of all students within and outside campus.	41	25	7	0	0	73	
9	Rate your satisfaction level with respect to bus or van transportation facilities.	44	27	2	0	0	73	
10	Rate your satisfaction level with respect to good and hygienic drinking water system in college premises.	37	31	0	0	0	68	
		TOTAL	418	276	30	0	0	724
		SUM TOTAL	847	551	56	0	0	1454

NOTE

- 1 = EXCELLANT
- 2 = BEST
- 3 = GOOD
- 4 = AVERAGE
- 5 = POOR

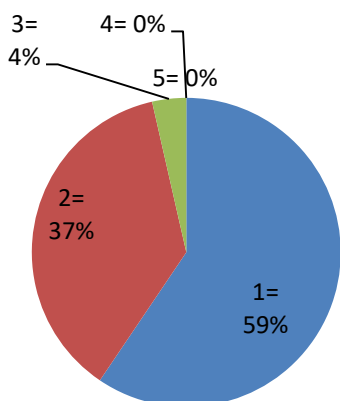




GRAPHICAL ANALYSIS OF STUDENTS FEEDBACK RESPONSE 2022-23

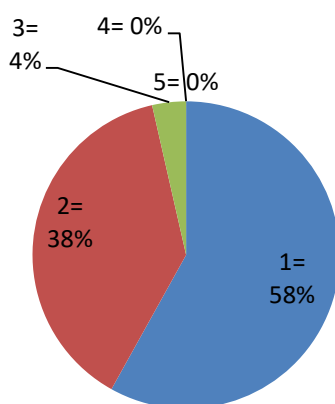
A. Academic Performance

1 2 3 4 5



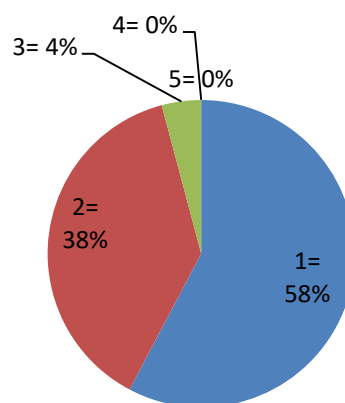
B. Feedback on Teaching, Learning and Assessment

1 2 3 4 5



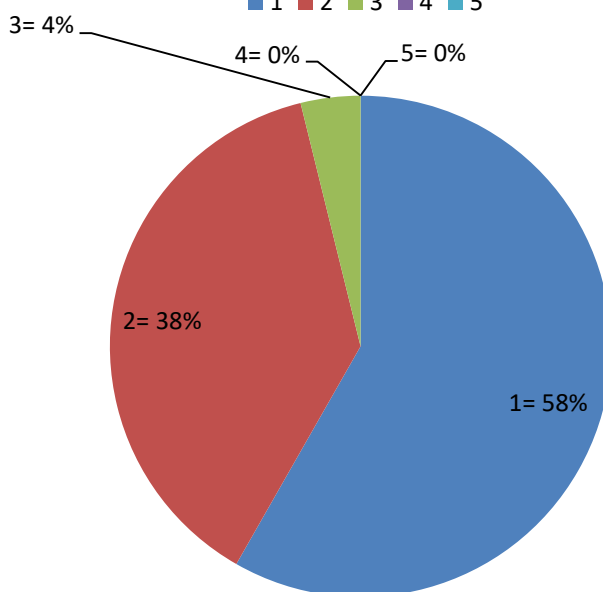
C. Feedback on Facilities and Infrastructure

1 2 3 4 5



SUM TOTAL

1 2 3 4 5





KASHI INSTITUTE OF PHARMACY

Managed by: JAIN EDUCATION SOCIETY

E-mail: info@kashiit.ac.in Website: <https://kashiip.ac.in> 1800-123-321-123

TABULAR ANALYSIS OF STUDENTS FEEDBACK RESPONSE 2022-23

A. Academic Performance		1	2	3	4	5	TOTAL
	Rate the relevance of study structure in context of present industry needs.	61	4	0	0	0	65
2	Rate the synchronization between theory and lab courses in study curriculum.	48	17	0	0	0	65
3	Rate the weightage allocated and length of course syllabus.	46	19	0	0	0	65
4	How you rate the importance and usefulness of value - added course.	44	19	2	0	0	65
5	Rate the pliability in the selection of elective subject in course curriculum.	52	13	0	0	0	65
B. Feedback on Teaching, Learning and Assessment		TOTAL					
1	Rate the employment of ICT and teaching skills used in curriculum plan.	43	20	1	1	0	65
2	Rate the completeness of syllabus in the class and its effectiveness.	39	25	1	0	0	65
3	Rate the availability of e study materials and notes of subjects in students LMS.	48	16	0	1	0	65
4	Rate the future viewpoint of for self learning, student centric and oriented learning and activity based learning.	42	22	1	0	0	65
5	Rate the effectiveness and activity based learning on assessment process.	39	24	2	0	0	65
C. Feedback on Facilities and Infrastructure		TOTAL					
1	Rate the level of education and study atmosphere in college campus.	48	16	1	0	0	65
2	Give the scores according to the level of hygiene and food provided in college canteen and mess.	47	18	0	0	0	65
3	Rate the college's library, sitting arrangements, availability of books and journals.	36	28	1	0	0	65
4	Rate your consent level with respect to internet bandwidth and infrastructure.	35	22	8	0	0	65
5	Rate your satisfaction with the availability of glasswares and other items in institute laboratory.	49	14	1	1	0	65
6	Rate your consent level with respect to safety within institute campus and security level.	45	18	2	0	0	65
7	Rate your satisfaction level with respect to first aid availability and disaster management.	45	18	2	0	0	65
8	Rate your satisfaction level in the respect of safety and security of all students within and outside campus.	41	22	2	0	0	65
9	Rate your satisfaction level with respect to bus or van transportation facilities.	49	12	4	0	0	65
10	Rate your satisfaction level with respect to good and hygienic drinking water system in college premises.	47	17	0	1	0	65
TOTAL		442	185	21	2	0	650
SUM TOTAL		904	364	28	4	0	1300

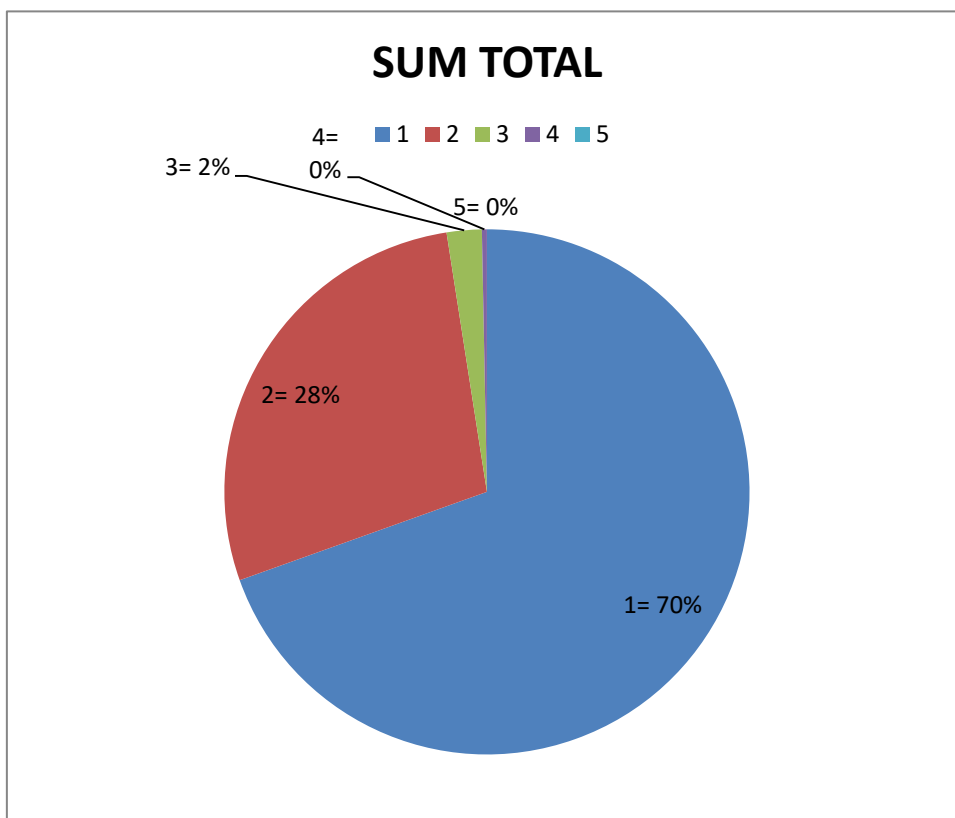
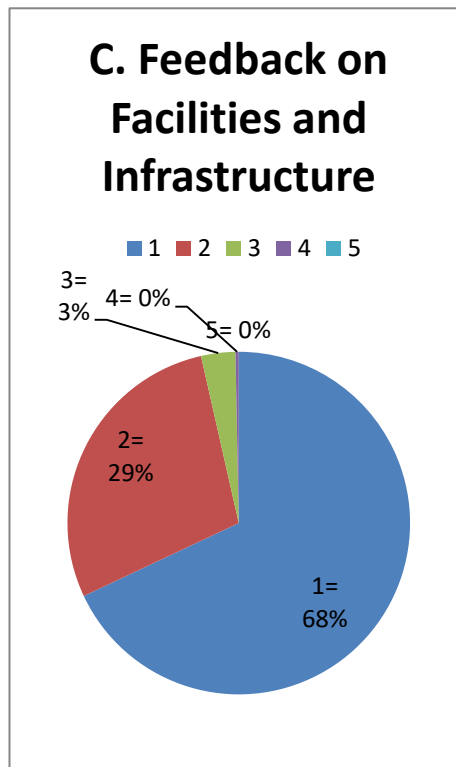
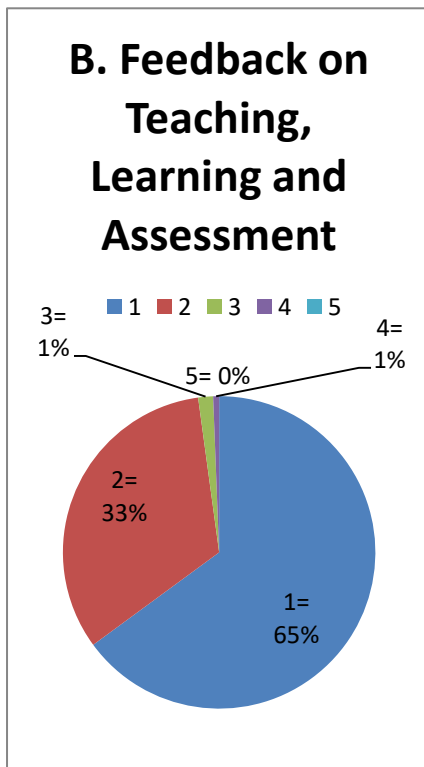
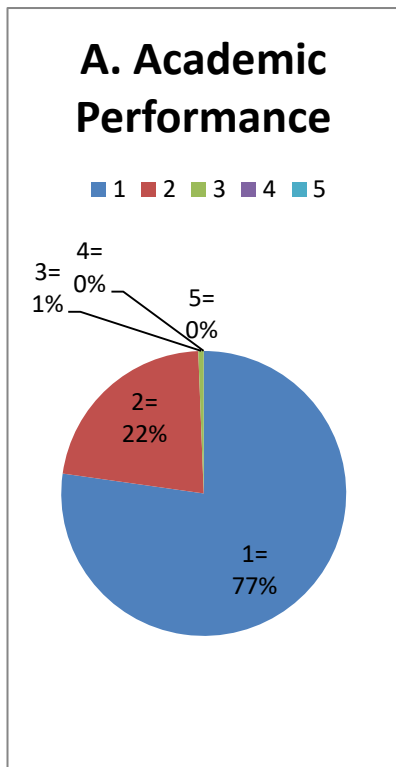
NOTE

- 1 = EXCELLANT
- 2 = BEST
- 3 = GOOD
- 4 = AVERAGE
- 5 = POOR





GRAPHICAL ANALYSIS OF STUDENTS FEEDBACK RESPONSE 2022-23





KASHI INSTITUTE OF PHARMACY

Managed by: JAIN EDUCATION SOCIETY

E-mail: info@kashiit.ac.in Website: <https://kashiip.ac.in> 1800-123-321-123

ACTION TEKEN REPORT OF STUDENTS FEEDBACK

Feedback Committee has decided to improve the following mentioned points after obtaining the feedback from the Students.

1. Selection of elective subject in course curriculum.
2. Availability of e study materials and notes.
3. Effectiveness and activity based learning.
4. Availability of books and journals.
5. Bus or van transportation facilities.





KASHI INSTITUTE OF PHARMACY

Managed by: JAIN EDUCATION SOCIETY

E-mail: info@kashiit.ac.in Website: <https://kashiip.ac.in> 1800-123-321-123

TABULAR ANALYSIS OF FACULTY FEEDBACK RESPONSE 2022-23

Feedback on Curriculum		1	2	3	4	5	TOTAL
1	Rate the usefulness of course objectives and study materials given in the syllabus.	13	4	1	0	1	19
2	Rate the size and time duration provided for the proper completion of syllabus.	8	6	1	3	1	19
3	Rate the awards, weightage and marking scheme assigned to per course syllabus.	5	11	3	0	0	19
4	How you rate the applicability of course syllabus with industrial connection and marketing approach.	11	3	3	2	0	19
5	Rate the suitability of course content in shaping the employment opportunities.	4	11	4	0	0	19
Feedback on Teaching, Learning and Assessment		TOTAL					
1	Rate the time duration allocated for preparing lecture plan.	5	10	4	0	0	19
2	Rate the availabilities for delivering new teaching methodologies.	10	7	2	0	0	19
3	Rate the student's knowledge and understanding level.	4	7	5	3	0	19
4	Rate the feedback obtained by students for the respective faculty with respect to lecture deliverance.	5	8	5	0	1	19
5	Rate the assessment and evaluation process adopted in curriculum.	4	14	1	0	0	19
Feedback on Facilities and Infrastructure		TOTAL					
1	Rate the digital education facilities provided in classrooms.	13	2	4	0	0	19
2	Give the scores for the holistic education environment in college campus.	5	11	2	1	0	19
3	Rate the financial support provided to faculties for promoting research culture among all.	2	7	7	3	0	19
4	Rate your consent level with respect to internet bandwidth and infrastructure.	5	9	4	1	0	19
5	Rate your satisfaction with the availability of institute facilities for the advantage of stakeholders.	9	6	4	0	0	19
TOTAL		34	35	21	5	0	95
SUM TOTAL		103	116	50	13	3	285

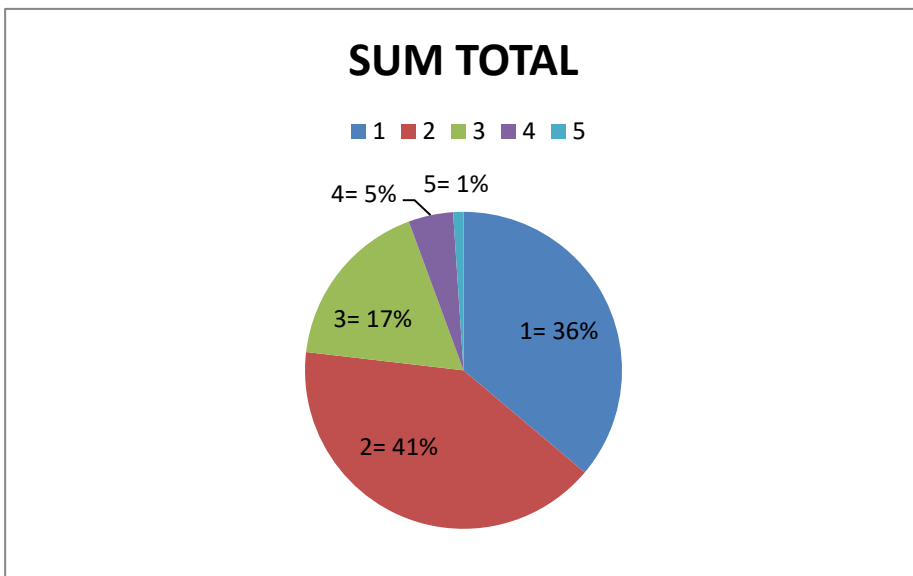
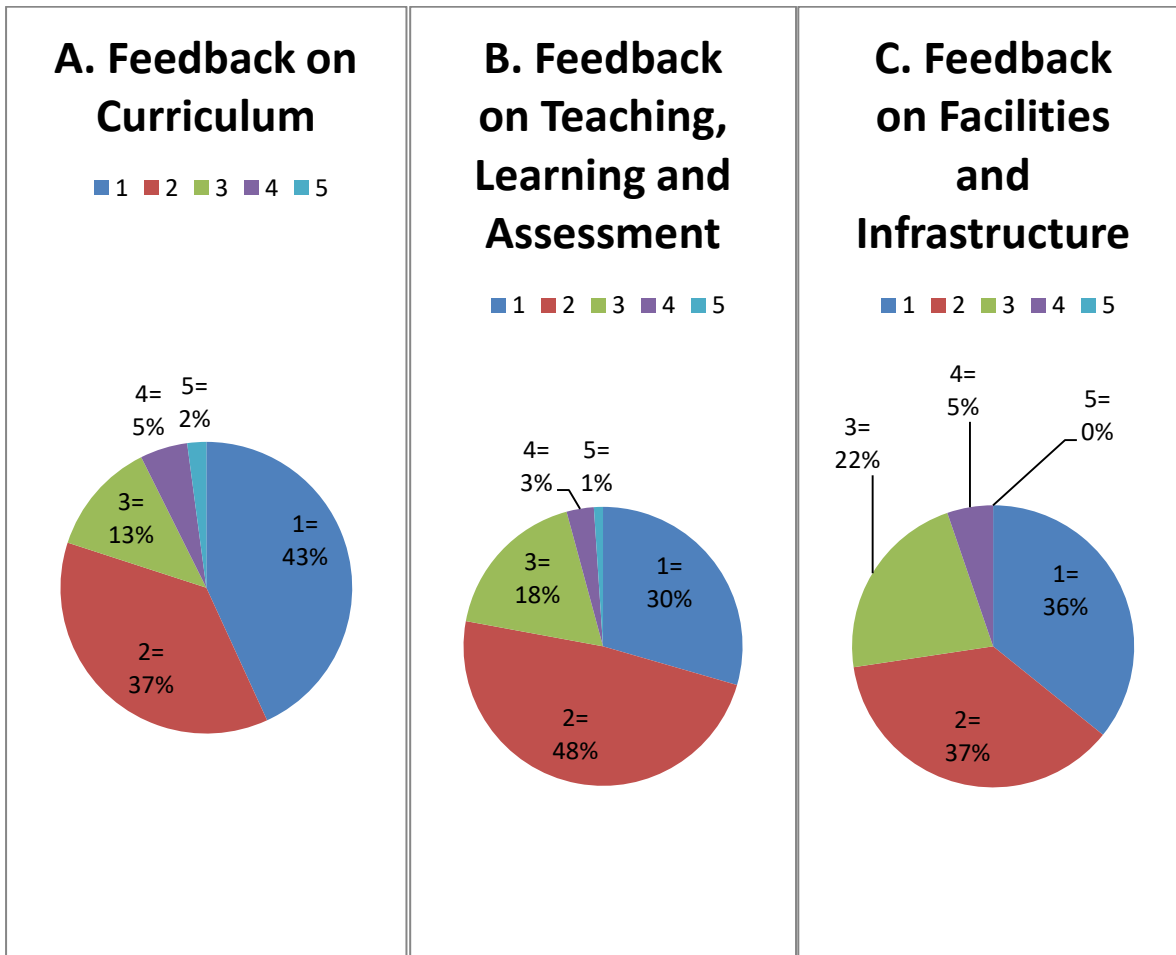
NOTE

- 1 = EXCELLANT
- 2 = BEST
- 3 = GOOD
- 4 = AVERAGE
- 5 = POOR





GRAPHICAL ANALYSIS OF FACULTY FEEDBACK RESPONSE 2022-23





KASHI INSTITUTE OF PHARMACY

Managed by: JAIN EDUCATION SOCIETY

E-mail: info@kashiit.ac.in Website: <https://kashiip.ac.in> 1800-123-321-123

ACTION TEKEN REPORT OF FACULTY FEEDBACK

Feedback Committee has decided to improve the following mentioned points after obtaining the feedback from the faculty.

1. Student's knowledge and understanding level.
2. Digital education facilities provided in classrooms.
3. Holistic education environment in college campus.
4. Promoting research culture among all.
5. Availability of institute facilities for the advantage of stakeholders.





KASHI INSTITUTE OF PHARMACY

Managed by: JAIN EDUCATION SOCIETY

E-mail: info@kashiit.ac.in Website: <https://kashiip.ac.in> 1800-123-321-123

TABULAR ANALYSIS OF ALUMNI FEEDBACK RESPONSE 2022-23

A. Feedback on course study		1	2	3	4	5	TOTAL
1	Rate the relevance of study structure in context of present industry needs.	25	4	0	0	0	29
2	Rate the synchronization between theory and lab courses in study curriculum.	11	17	1	0	0	29
3	Rate the standard of co-curricular activities adopted during course curriculum.	15	11	3	0	0	29
4	How you rate the importance and usefulness of course curriculum in establishing linkage between academia and corporate world.	14	10	3	2	0	29
5	Rate the pliability of subject in course curriculum for shaping the career framework of a student.	17	9	2	1	0	29
B. Feedback on Teaching, Learning and Assessment		82	51	9	3	0	145
1	Rate the employment of ICT and teaching skills used in curriculum plan.	18	8	1	2	0	29
2	Rate the completeness of syllabus in the class and its effectiveness.	15	11	3	0	0	29
3	Rate the availability of e study materials and notes of subjects in students LMS.	11	14	2	2	0	29
4	Rate the future viewpoint of for self learning, student centric and oriented learning and activity based learning.	12	14	3	0	0	29
5	Rate the effectiveness and activity based learning on assessment process.	23	5	0	1	0	29
C. Feedback on Facilities and Infrastructure		79	52	9	5	0	145
1	Rate the level of education and study atmosphere in college campus.	13	12	4	0	0	29
2	Give the scores according to the level of hygiene and food provided in college canteen and mess.	16	11	2	0	0	29
3	Rate the college's library, sitting arrangements, availability of books and research articles.	16	8	4	1	0	29
4	Rate your consent level with respect to internet bandwidth and infrastructure.	12	14	3	0	0	29
5	Rate your satisfaction with the availability of glasswares and other items in college laboratory.	17	11	1	0	0	29
6	Rate your consent level with respect to safety within college campus and security level.	19	9	0	1	0	29
7	Rate your satisfaction level with respect to first aid availability and disaster management.	13	14	2	0	0	29
8	Rate your satisfaction level in the respect of safety and security of all students within and outside campus.	14	11	3	1	0	29
9	Rate your satisfaction level with respect to bus or van transportation facilities.	17	9	1	2	0	29
10	Rate your satisfaction level with respect to good and hygienic drinking water system in college premises.	18	10	0	1	0	29
TOTAL		155	109	20	6	0	290
SUM TOTAL		316	212	38	14	0	580

NOTE

- 1 = EXCELLANT
- 2 = BEST
- 3 = GOOD
- 4 = AVERAGE
- 5 = POOR





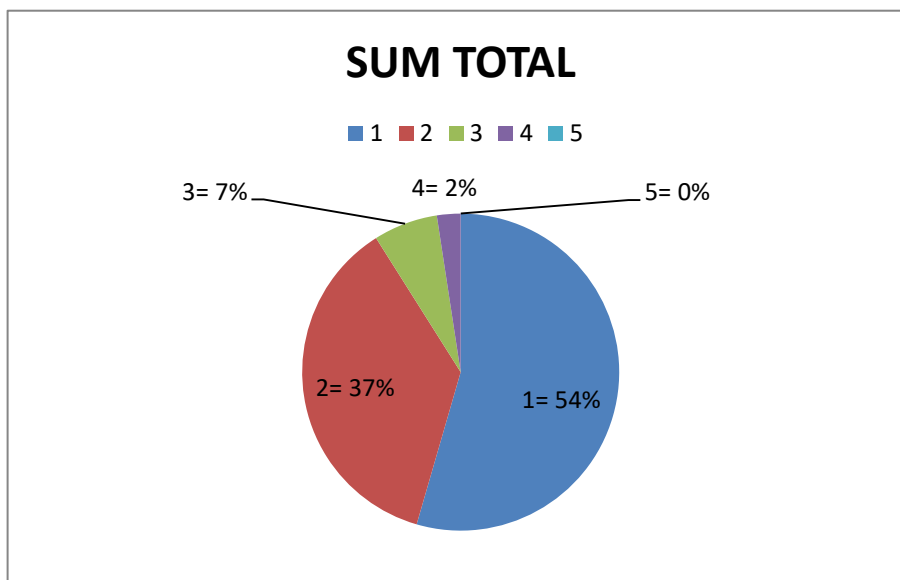
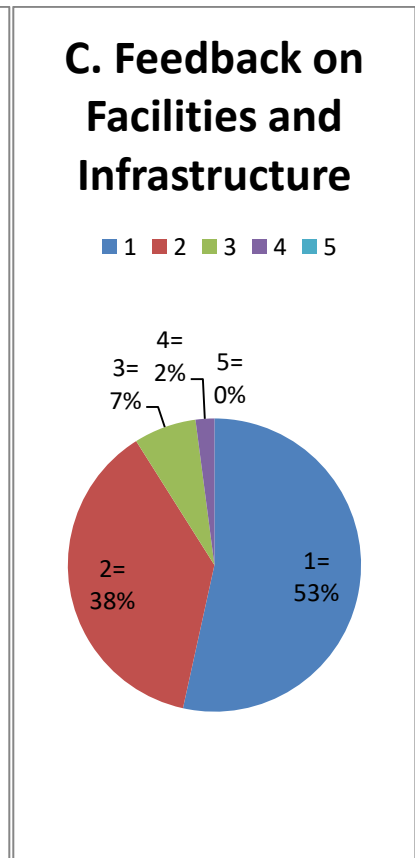
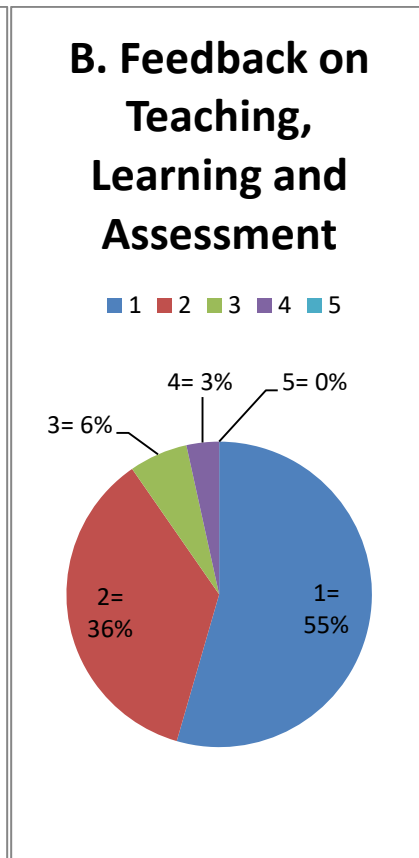
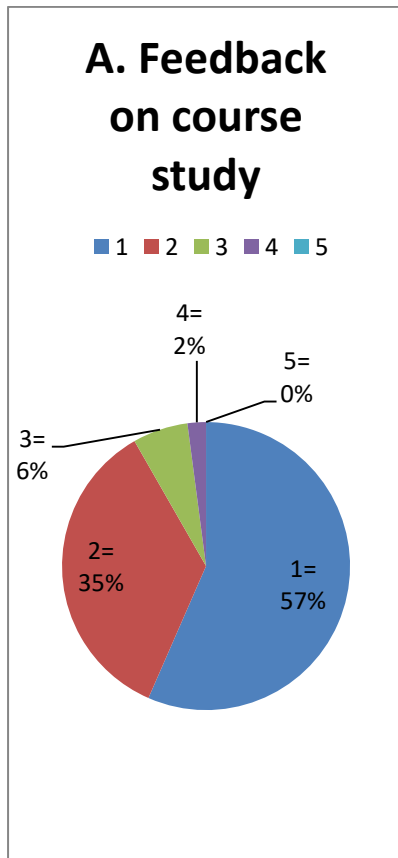
KASHI INSTITUTE OF PHARMACY

Managed by: JAIN EDUCATION SOCIETY

E-mail: info@kashiit.ac.in Website: <https://kashiip.ac.in>

1800-123-321-123

GRAPHICAL ANALYSIS OF ALUMNI FEEDBACK RESPONSE 2022-23





KASHI INSTITUTE OF PHARMACY

Managed by: JAIN EDUCATION SOCIETY

E-mail: info@kashiit.ac.in Website: <https://kashiip.ac.in> 1800-123-321-123

ACTION TEKEN REPORT OF ALUMNI FEEDBACK

Feedback Committee has decided to improve the following mentioned points after obtaining the feedback from the alumni.

1. Co-curricular activities adopted during course curriculum.
2. Linkage between academia and corporate world.
3. Course curriculum for shaping the career framework of a student.
4. Activity based learning on assessment process.





KASHI INSTITUTE OF PHARMACY

Managed by: JAIN EDUCATION SOCIETY

E-mail: info@kashiit.ac.in Website: <https://kashiip.ac.in> 1800-123-321-123

TABULAR ANALYSIS OF EMPLOYER FEEDBACK RESPONSE 2022-23

A. Feedback on course study	
1	Rate the relevance of study structure in context of present industry needs.
2	Rate the synchronization between experimental and project involved study in the course curriculum.
3	Rate the standard course curriculum in shaping opportunities for entrepreneurship.
4	How you rate the importance and usefulness of course curriculum in establishing linkage between academia and corporate world.
5	Rate the importance of add on course in curriculum for shaping the career framework of a student.
B. Feedback on Life Skills	
1	Rate the student overall learning and knowledge level.
2	Rate the professional effectiveness of students.
3	Rate the quality and communication skills of students.
4	Rate the organization and independent self decision skills of students.
5	Rate the effectiveness and activity based learning on assessment process.
C. Feedback on Student Support System & Ambience	
1	Rate the student mentoring and response system.
2	Give the scores in context to student's personal behaviour and ethical doing.
3	Rate the library and book facilities of institute.
4	Rate your consent level with respect to organization and thinking skills of candidates.
5	Rate the self motivation and independent decision skills of students.
6	Rate your consent level with respect to safety within college campus and security level.
7	Rate your satisfaction level with respect to self motivation and growth skill of students.

	1	2	3	4	5	TOTAL
	8	0	0	0	0	8
	3	5	0	0	0	8
	7	1	0	0	0	8
	5	3	0	0	0	8
	5	3	0	0	0	8
TOTAL	28	12	0	0	0	40
	5	2	1	0	0	8
	5	2	1	0	0	8
	6	2	0	0	0	8
	6	2	0	0	0	8
	6	1	1	0	0	8
TOTAL	28	9	3	0	0	40
	7	1	0	0	0	8
	5	2	1	0	0	8
	4	4	0	0	0	8
	5	3	0	0	0	8
	7	1	0	0	0	8
	7	1	0	0	0	8
	6	1	1	0	0	8
TOTAL	41	13	2	0	0	56
SUM TOTAL	97	34	5	0	0	136

NOTE

- 1 = EXCELLANT
- 2 = BEST
- 3 = GOOD
- 4 = AVERAGE
- 5 = POOR





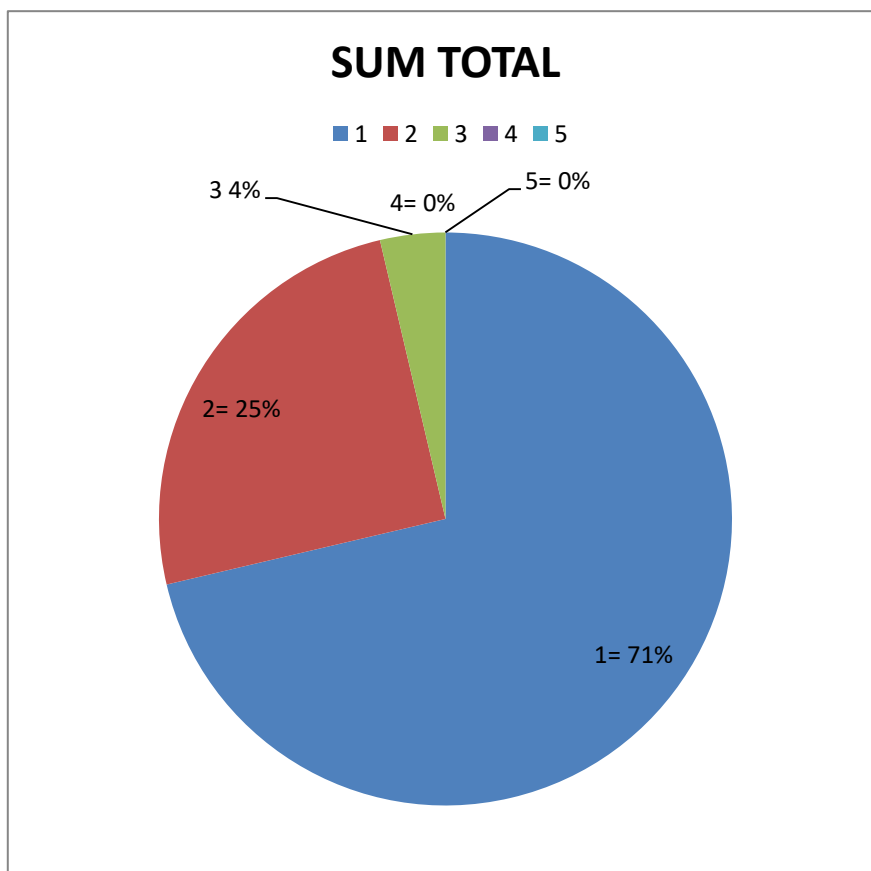
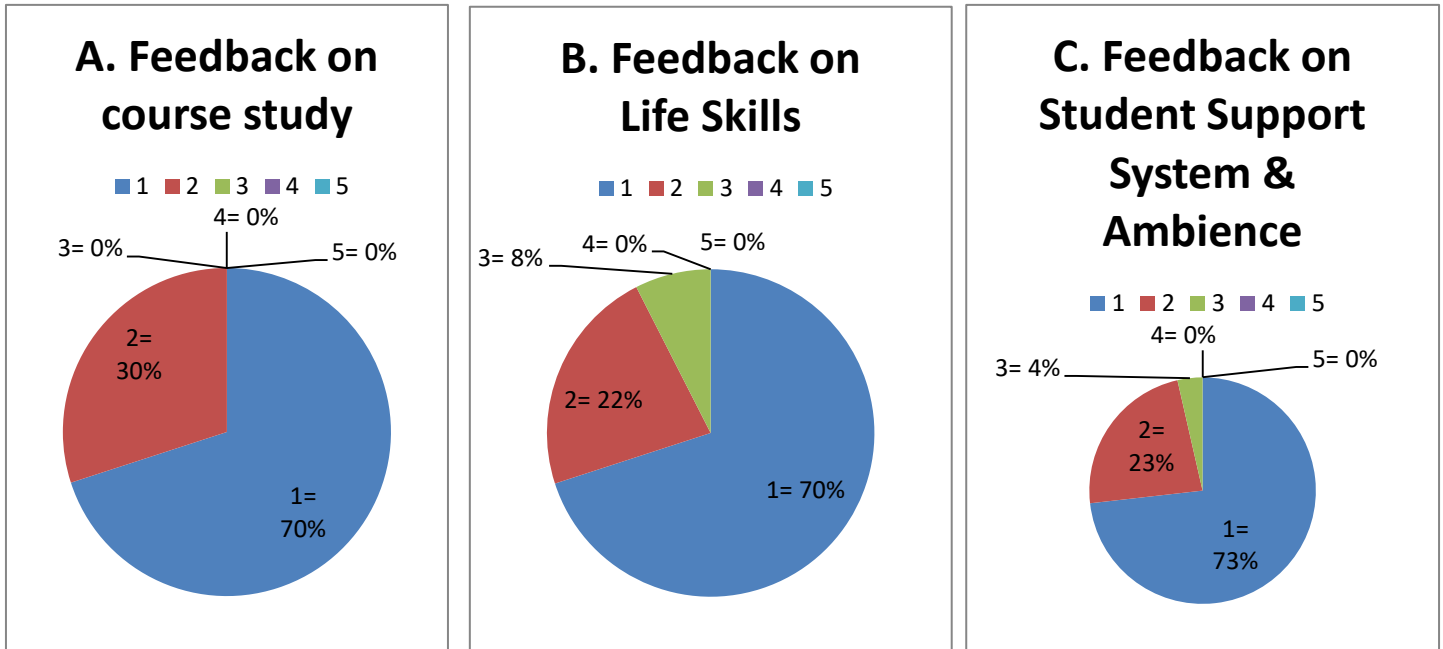
KASHI INSTITUTE OF PHARMACY

Managed by: JAIN EDUCATION SOCIETY

E-mail: info@kashiit.ac.in Website: <https://kashiip.ac.in>

1800-123-321-123

GRAPHICAL ANALYSIS OF EMPLOYER FEEDBACK RESPONSE 2022-23





KASHI INSTITUTE OF PHARMACY

Managed by: JAIN EDUCATION SOCIETY

E-mail: info@kashiit.ac.in Website: <https://kashiip.ac.in> ☎ 1800-123-321-123

ACTION TEKEN REPORT OF EMPLOYER FEEDBACK

Feedback Committee has decided to improve the following mentioned points after obtaining the feedback from the employer.

1. Professional effectiveness of students.
2. Quality and communication skills of students.
3. Self-decision skills of students.
4. Thinking skills of candidates.
5. Self-motivation and growth skill of students.





KASHI INSTITUTE OF PHARMACY

Manage by: Jain Education Society

23 km Milestone, Varanasi- Allahabad Road, Mirzamurad, Varanasi (U. P.)

Student Feedback

NAME OF THE STUDENT: Abhishek Singh
ENROLLMENT NUMBER: 1905510500001
PROGRAM: B.Pharm
SEMESTER: 3rd
ACADEMIC YEAR: 2022-2023
DATE: 11/04/23

Scale for Survey:

1. Excellent 2. Best 3. Good 4. Average 5. Poor

A. Academic Performance		
1	Rate the relevance of study structure in context of present industry needs.	1
2	Rate the synchronization between theory and lab courses in study curriculum.	1
3	Rate the weightage allocated and length of course syllabus.	1
4	How you rate the importance and usefulness of value - added course.	1
5	Rate the pliability in the selection of elective subject in course curriculum.	2

B. Feedback on Teaching, Learning and Assessment		
1	Rate the employment of ICT and teaching skills used in curriculum plan.	2
2	Rate the completeness of syllabus in the class and its effectiveness.	2
3	Rate the availability of e study materials and notes of subjects in students LMS.	1
4	Rate the future viewpoint of for self learning, student centric and oriented learning and activity based learning.	1
5	Rate the effectiveness and activity based learning on assessment process.	1

C. Feedback on Facilities and Infrastructure		
1	Rate the level of education and study atmosphere in college campus.	1
2	Give the scores according to the level of hygiene and food provided in college canteen and mess.	1
3	Rate the college's library, sitting arrangements, availability of books and journals.	1
4	Rate your consent level with respect to internet bandwidth and infrastructure.	1
5	Rate your satisfaction with the availability of glasswares and other items in institute laboratory.	2
6	Rate your consent level with respect to safety within institute campus and security level.	2
7	Rate your satisfaction level with respect to first aid availability and disaster management.	2
8	Rate your satisfaction level in the respect of safety and security of all students within and outside campus.	2
9	Rate your satisfaction level with respect to bus or van transportation facilities.	1
10	Rate your satisfaction level with respect to good and hygienic drinking water system in college premises.	1

Comments/ Suggestions (If Any).....

Abhishek Singh
Students Signature



KASHI INSTITUTE OF PHARMACY

Managed by: Jain Education Society

23 km Milestone, Varanasi- Allahabad Road, Mirzamurad, Varanasi (U. P.)

Student Feedback

NAME OF THE STUDENT: ABHISHEK YADAV
ENROLLMENT NUMBER: 1905510500002
PROGRAM: B. Pharm
SEMESTER: 8th
ACADEMIC YEAR: 2022-2023
DATE: 11/04/23

Scale for Survey:

1. Excellent 2. Best 3. Good 4. Average 5. Poor

A. Academic Performance		
1	Rate the relevance of study structure in context of present industry needs.	1
2	Rate the synchronization between theory and lab courses in study curriculum.	1
3	Rate the weightage allocated and length of course syllabus.	1
4	How you rate the importance and usefulness of value - added course.	1
5	Rate the pliability in the selection of elective subject in course curriculum.	1

B. Feedback on Teaching, Learning and Assessment		
1	Rate the employment of ICT and teaching skills used in curriculum plan.	2
2	Rate the completeness of syllabus in the class and its effectiveness.	2
3	Rate the availability of e study materials and notes of subjects in students LMS.	2
4	Rate the future viewpoint of for self learning, student centric and oriented learning and activity based learning.	2
5	Rate the effectiveness and activity based learning on assessment process.	2

C. Feedback on Facilities and Infrastructure		
1	Rate the level of education and study atmosphere in college campus.	1
2	Give the scores according to the level of hygiene and food provided in college canteen and mess.	2
3	Rate the college's library, sitting arrangements, availability of books and journals.	1
4	Rate your consent level with respect to internet bandwidth and infrastructure.	2
5	Rate your satisfaction with the availability of glasswares and other items in institute laboratory.	1
6	Rate your consent level with respect to safety within institute campus and security level.	2
7	Rate your satisfaction level with respect to first aid availability and disaster management.	1
8	Rate your satisfaction level in the respect of safety and security of all students within and outside campus.	2
9	Rate your satisfaction level with respect to bus or van transportation facilities.	1
10	Rate your satisfaction level with respect to good and hygienic drinking water system in college premises.	2

Comments/ Suggestions (If Any).....

Abhishek Yadav
Students Signature



KASHI INSTITUTE OF PHARMACY

Managed by: Jain Education Society

23 km Milestone, Varanasi- Allahabad Road, Mirzamurad, Varanasi (U. P.)

Faculty Feedback

NAME OF THE FACULTY : Dr. Ashutosh Mishra
DESIGNATION : Professor - In-charge
ACADEMIC YEAR : 22-23
DATE : 14/8/23

Scale for Survey

1. Excellent 2. Best 3. Good 4. Average 5. Poor

Feedback on Curriculum		
1	Rate the usefulness of course objectives and study materials given in the syllabus.	1
2	Rate the size and time duration provided for the proper completion of syllabus.	2
3	Rate the awards, weightage and marking scheme assigned to per course syllabus.	2
4	How you rate the applicability of course syllabus with industrial connection and marketing approach.	2
5	Rate the suitability of course content in shaping the employment opportunities.	2

Feedback on Teaching, Learning and Assessment		
1	Rate the time duration allocated for preparing lecture plan.	2
2	Rate the availabilities for delivering new teaching methodologies.	1
3	Rate the student's knowledge and understanding level.	2
4	Rate the feedback obtained by students for the respective faculty with respect to lecture deliverance.	2
5	Rate the assessment and evaluation process adopted in curriculum.	1

Feedback on Facilities and Infrastructure		
1	Rate the digital education facilities provided in classrooms.	1
2	Give the scores for the holistic education environment in college campus.	1
3	Rate the financial support provided to faculties for promoting research culture among all.	2
4	Rate your consent level with respect to internet bandwidth and infrastructure.	1
5	Rate your satisfaction with the availability of institute facilities for the advantage of stakeholders.	1

Comments/ Suggestions (If Any) NA


Faculty Signature



KASHI INSTITUTE OF PHARMACY

Manage by: Jain Education Society

23 km Milestone, Varanasi- Allahabad Road, Mirzamurad, Varanasi (U. P.)

Faculty Feedback

NAME OF THE FACULTY : Prateek Mishra
FACULTY ID NO :
DEPARTMENT : Pharmacy
DESIGNATION : Assistant Professor
ACADEMIC YEAR : 2022-2023
DATE : 18/08/23

Scale for Survey

1. Excellent 2. Best 3. Good 4. Average 5. Poor

Feedback on Curriculum		
1	Rate the usefulness of course objectives and study materials given in the syllabus.	1
2	Rate the size and time duration provided for the proper completion of syllabus.	1
3	Rate the awards, weightage and marking scheme assigned to per course syllabus.	1
4	How you rate the applicability of course syllabus with industrial connection and marketing approach.	1
5	Rate the suitability of course content in shaping the employment opportunities.	1

Feedback on Teaching, Learning and Assessment		
1	Rate the time duration allocated for preparing lecture plan.	1
2	Rate the availabilities for delivering new teaching methodologies.	1
3	Rate the student's knowledge and understanding level.	1
4	Rate the feedback obtained by students for the respective faculty with respect to lecture deliverance.	1
5	Rate the assessment and evaluation process adopted in curriculum.	1

Feedback on Facilities and Infrastructure		
1	Rate the digital education facilities provided in classrooms.	1
2	Give the scores for the holistic education environment in college campus.	2
3	Rate the financial support provided to faculties for promoting research culture among all.	2
4	Rate your consent level with respect to internet bandwidth and infrastructure.	2
5	Rate your satisfaction with the availability of institute facilities for the advantage of stakeholders.	1

Comments/ Suggestions (If Any).....

Prateek Mishra
Faculty Signature



KASHI INSTITUTE OF PHARMACY

2

Managed by: Jain Education Society

23 km Milestone, Varanasi- Allahabad Road, Mirzamurad, Varanasi (U. P.)

Alumni Feedback

NAME OF THE STUDENT: SARVESH YADAV
 ENROLLMENT NUMBER: 1855150058
 DEPARTMENT: Pharmacy
 CURRENT JOB PROFILE:
 PASS OUT YEAR: 23
 DATE: 08/04/23

Scale for Survey:

1. Excellent 2. Best 3. Good 4. Average 5. Poor

A. Feedback on course study		
1	Rate the relevance of study structure in context of present industry needs.	1
2	Rate the synchronization between theory and lab courses in study curriculum.	1
3	Rate the standard of co-curricular activities adopted during course curriculum.	2
4	How you rate the importance and usefulness of course curriculum in establishing linkage between academia and corporate world.	1
5	Rate the pliability of subject in course curriculum for shaping the career framework of a student.	1
B. Feedback on Teaching, Learning and Assessment		
1	Rate the employment of ICT and teaching skills used in curriculum plan.	1
2	Rate the completeness of syllabus in the class and its effectiveness.	1
3	Rate the availability of e study materials and notes of subjects in students LMS.	1
4	Rate the future viewpoint of for self learning, student centric and oriented learning and activity based learning.	2
5	Rate the effectiveness and activity based learning on assessment process.	1
C. Feedback on Facilities and Infrastructure		
1	Rate the level of education and study atmosphere in college campus.	3
2	Give the scores according to the level of hygiene and food provided in college canteen and mess.	1
3	Rate the college's library, sitting arrangements, availability of books and research articles.	1
4	Rate your consent level with respect to internet bandwidth and infrastructure.	1
5	Rate your satisfaction with the availability of glasswares and other items in college laboratory.	2
6	Rate your consent level with respect to safety within college campus and security level.	1
7	Rate your satisfaction level with respect to first aid availability and disaster management.	1
8	Rate your satisfaction level in the respect of safety and security of all students within and outside campus.	2
9	Rate your satisfaction level with respect to bus or van transportation facilities.	1
10	Rate your satisfaction level with respect to good and hygienic drinking water system in college premises.	1

Comments/ Suggestions (If Any).....

Sarvesh
Students Signature



KASHI INSTITUTE OF PHARMACY

Manage by: Jain Education Society

23 km Milestone, Varanasi- Allahabad Road, Mirzamurad, Varanasi (U. P.)

Alumni Feedback

NAME OF THE STUDENT: Rohit Kumar Upadhyay
 ENROLLMENT NUMBER: 1855150054
 DEPARTMENT: Pharmacy
 CURRENT JOB PROFILE:
 PASS OUT YEAR: 23
 DATE: 08/04/23

Scale for Survey:

1. Excellent 2. Best 3. Good 4. Average 5. Poor

A. Feedback on course study		
1	Rate the relevance of study structure in context of present industry needs.	1
2	Rate the synchronization between theory and lab courses in study curriculum.	1
3	Rate the standard of co-curricular activities adopted during course curriculum.	1
4	How you rate the importance and usefulness of course curriculum in establishing linkage between academia and corporate world.	2
5	Rate the pliability of subject in course curriculum for shaping the career framework of a student.	1
B. Feedback on Teaching, Learning and Assessment		
1	Rate the employment of ICT and teaching skills used in curriculum plan.	1
2	Rate the completeness of syllabus in the class and its effectiveness.	1
3	Rate the availability of e study materials and notes of subjects in students LMS.	1
4	Rate the future viewpoint of for self learning, student centric and oriented learning and activity based learning.	2
5	Rate the effectiveness and activity based learning on assessment process.	1
C. Feedback on Facilities and Infrastructure		
1	Rate the level of education and study atmosphere in college campus.	1
2	Give the scores according to the level of hygiene and food provided in college canteen and mess.	1
3	Rate the college's library, sitting arrangements, availability of books and research articles.	1
4	Rate your consent level with respect to internet bandwidth and infrastructure.	1
5	Rate your satisfaction with the availability of glasswares and other items in college laboratory.	2
6	Rate your consent level with respect to safety within college campus and security level.	1
7	Rate your satisfaction level with respect to first aid availability and disaster management.	2
8	Rate your satisfaction level in the respect of safety and security of all students within and outside campus.	1
9	Rate your satisfaction level with respect to bus or van transportation facilities.	1
10	Rate your satisfaction level with respect to good and hygienic drinking water system in college premises.	2

Comments/ Suggestions (If Any).....

Rohit
Students Signature



KASHI INSTITUTE OF PHARMACY

Manage by: Jain Education Society

23 km Milestone, Varanasi- Allahabad Road, Mirzamurad, Varanasi (U. P.)

Employer Feedback

NAME OF THE EMPLOYER: Mac Levels Pharma
DESIGNATION: Production Manager
COMPANY NAME: Mac Levels Pharma
DEPARTMENT: Production
OCCUPATION: Production officer
ACADEMIC YEAR: 2022-23
DATE: 10/10/23

Scale for Survey:

1. Excellent 2. Best 3. Good 4. Average 5. Poor

A. Feedback on course study		
1	Rate the relevance of study structure in context of present industry needs.	1
2	Rate the synchronization between experimental and project involved study in the course curriculum.	2
3	Rate the standard course curriculum in shaping opportunities for entrepreneurship.	1
4	How you rate the importance and usefulness of course curriculum in establishing linkage between academia and corporate world.	1
5	Rate the importance of add on course in curriculum for shaping the career framework of a student.	2

B. Feedback on Life Skills		
1	Rate the student overall learning and knowledge level.	1
2	Rate the professional effectiveness of students.	1
3	Rate the quality and communication skills of students.	1
4	Rate the organization and independent self decision skills of students.	2
5	Rate the effectiveness and activity based learning on assessment process.	1

C. Feedback on Student Support System & Ambience		
1	Rate the student mentoring and response system.	1
2	Give the scores in context to student's personal behaviour and ethical doing.	3
3	Rate the library and book facilities of institute.	1
4	Rate your consent level with respect to organization and thinking skills of candidates.	1
5	Rate the self motivation and independent decision skills of students.	2
6	Rate your consent level with respect to safety within college campus and security level.	1
7	Rate your satisfaction level with respect to self motivation and growth skill of students.	3

Comments/ Suggestions (If Any)..... MA

Al Saiwar
Employer Signature



KASHI INSTITUTE OF PHARMACY

Managed by: Jain Education Society

23 km Milestone, Varanasi- Allahabad Road, Mirzamurad, Varanasi (U. P.)

Employer Feedback

NAME OF THE EMPLOYER: Linux Laboratories Pvt. Ltd.
DESIGNATION: Zonal Sales Manager
COMPANY NAME: Linux Laboratories Pvt. Ltd.
DEPARTMENT: Marketing
OCCUPATION: Medical Representative
ACADEMIC YEAR: 2022-2023
DATE: 03/06/23

Scale for Survey:

1. Excellent 2. Best 3. Good 4. Average 5. Poor

A. Feedback on course study		
1	Rate the relevance of study structure in context of present industry needs.	1
2	Rate the synchronization between experimental and project involved study in the course curriculum.	2
3	Rate the standard course curriculum in shaping opportunities for entrepreneurship.	1
4	How you rate the importance and usefulness of course curriculum in establishing linkage between academia and corporate world.	2
5	Rate the importance of add on course in curriculum for shaping the career framework of a student.	1

B. Feedback on Life Skills		
1	Rate the student overall learning and knowledge level.	1
2	Rate the professional effectiveness of students.	2
3	Rate the quality and communication skills of students.	1
4	Rate the organization and independent self decision skills of students.	2
5	Rate the effectiveness and activity based learning on assessment process.	1

C. Feedback on Student Support System & Ambience		
1	Rate the student mentoring and response system.	1
2	Give the scores in context to student's personal behaviour and ethical doing.	1
3	Rate the library and book facilities of institute.	2
4	Rate your consent level with respect to organization and thinking skills of candidates.	2
5	Rate the self motivation and independent decision skills of students.	1
6	Rate your consent level with respect to safety within college campus and security level.	1
7	Rate your satisfaction level with respect to self motivation and growth skill of students	2

Comments/ Suggestions (If Any)..... NA

Praveen Singh
Employer Signature