



CO – PO & CO – PSO ASSESSMENT AND ATTAINMENT EVALUATION FOR INTERNAL AND EXTERNAL EXAMINATIONS 2023-2024

Table-1 Sample of CO Statement

Course Objective:

1. Intended outcomes written to help guide instruction for what the students will learn in the course.
2. Course objectives are measurable objectives that the learner is expected to accomplish at the end of an instructional.
3. A statement of an action that a learner should be able to perform after successfully completing the learning material. e.g. course objective of HAP.

Course Objective (Human Anatomy & Physiology-I):

1. Explain the gross morphology, structure and functions of various organs of the human body.
2. Describe the various homeostatic mechanisms and their imbalances.
3. Identify the various tissues and organs of different systems of human body.
4. Perform the various experiments related to special senses and nervous system.
5. Appreciate coordinated working pattern of different organs of each system

COURSE OUTCOME STATEMENT

Course Outcomes (COs):

CO statements indicating what a student can do after the successful completion of a course. Every Course leads to some Course Outcomes. The CO statements are defined by considering the course content covered in each module of a course. For every course there may be 4 or 5 COs. The keywords used to define COs are based on Bloom's Taxonomy.

A well written CO facilitates lecturers in measuring the achievement of the CO at the end of the semester. It also helps the lecturers in designing suitable delivery and assessment methods to achieve the designed CO.





KASHI INSTITUTE OF PHARMACY

Managed by: JAIN EDUCATION SOCIETY

E-mail: info@kashiit.ac.in. Website: www.kashiip.ac.in 1800-123-321-123

Course 1 - HAP: (BP101T)		
COURSE OUTCOMES (COs)/UNITS		Knowledge Level (Blooms Level)
S. No.	By the end of the course student will be able to	
CO1	Remember, Understand & Applying gross morphology, structure and functions of various organs .	L1 : Remember L2: Understand L3 : Applying
CO2	Evaluate & Analyze homeostatic mechanisms and their imbalances .	L5 : Evaluate L4 : Analyze
CO3	Evaluate the hardness of water	L5 : Evaluate
CO4	Synthesize, create & Analyze the rate constant of reaction	L4 : Analyze L6: Synthesis
CO5	Understand & Apply the basic knowledge on structure, synthesis, properties and application of different types of polymers.	L2: Understand L3 : Applying

Program Outcomes (POs):

POs are defined by Accreditation Agencies of the country (NBA in India), which are the statements about the knowledge, skills and attitudes, graduate attributes of a formal pharmacy program should have. Graduates Attributes (GAs) are the components indicative of the graduate's potential to acquire competence to practice at the appropriate level. GAs form a set of individually assessable outcomes of the program. The NBA laid down the graduate attributes relating to program outcomes and is to be derived by Program. These are broad and cover a wider area than of COs. 12 Program Outcomes, or Graduate Attributes for the sake of unity and quality assurance.

The Program outcomes reflect the ability of graduates to demonstrate knowledge in fundamentals of Basic Sciences, Humanities and Social Sciences, Pharmacy and apply these principles in understanding and practically apply the knowledge in professional core subjects, electives and projects which enables the graduates to be competent at the time of graduation. The graduates must adhere to professional and ethical responsibilities in the pursuit of their careers and also for the benefit of the society. These outcomes also enable the graduate to pursue higher studies and engage in R&D for a successful professional career. Proper definition and the attainment of POs contribute to the attainment of Program Educational

Address: 23 km Milestone, Varanasi-Prayagraj Road, Mirzamurad, Varanasi- 221307 (Varanasi)

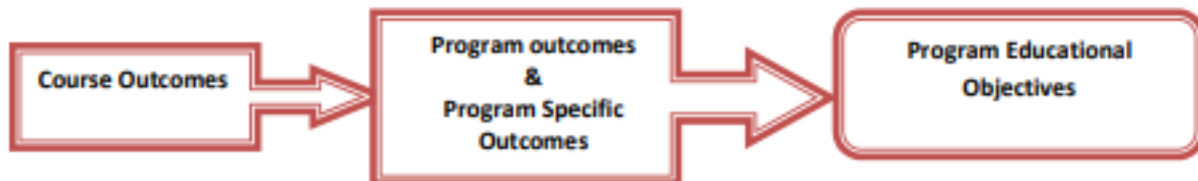


KASHI INSTITUTE OF PHARMACY

Managed by: JAIN EDUCATION SOCIETY

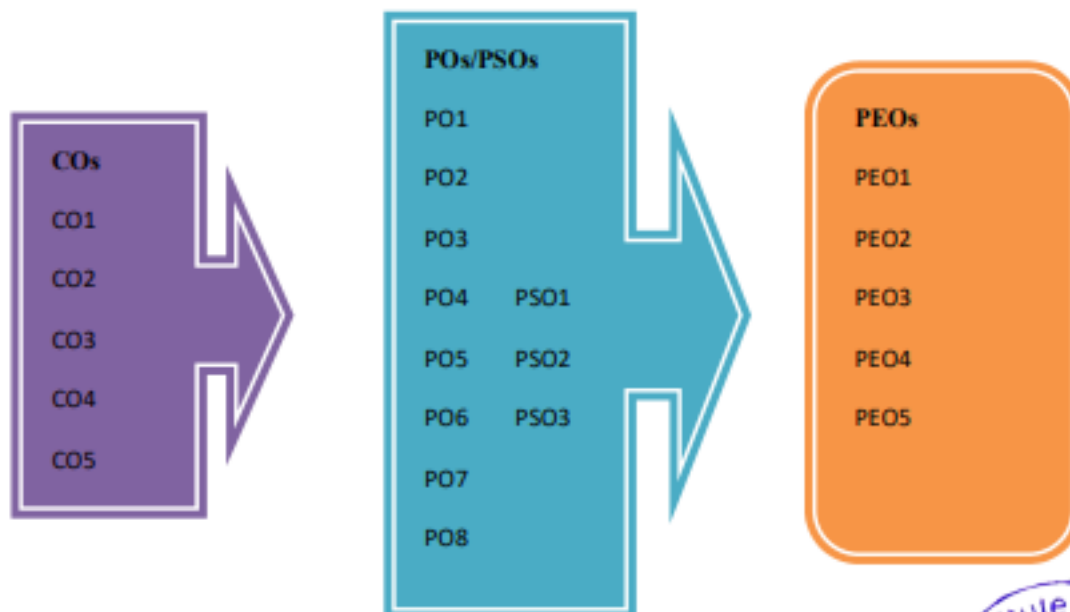
E-mail: info@kashiit.ac.in. Website: www.kashiip.ac.in 1800-123-321-123

Objectives which will help the graduate to perform his/ her duties, professional responsibilities, design, development, production and testing of novel products, ability to deal with finances and project management during his/her early professional career.



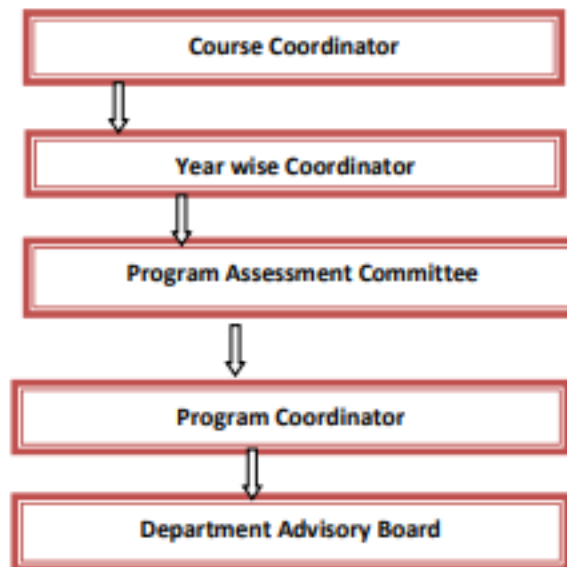
Relating Outcomes (CO-PO & PSO-PEO)

This figure shows the building block of CO-PO & PSO-PEO Relationship. After CO statements Develop by course in-charge, CO will map with any possible POs based on the relationship exist between them. But all POs are not necessary mapped with one CO and it may be left blank. Anyhow, it is mandatory that all POs should be mapped with any one of PSO and PEO which are specified in the program.



Relationship between CO, PO, PSO & PEO





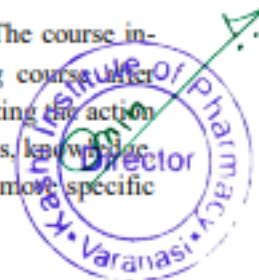
Hierarchy of Faculty Involvement

- ❖ **Course Coordinator:** write appropriate COs and finalize the CO-PO mapping.
- ❖ **Year wise Coordinator:** Consolidate the CO attainment of the respective year.
- ❖ **Program Assessment Committee:** Consolidate the CO attainment and PO attainment of the respective program.
- ❖ **Program Coordinator:** Monitor and Guide the Program Assessment Committee.
- ❖ **Department Advisory Board:** All these works mention above have to be done under the supervision of Department Advisory Board

CO – PO AND CO – PSO MAPPING OF COURSES

Mapping Factor (Correlation Level)

The role of CO-PO mapping will be assigned to the faculty as per hierarchy. The course in-charge is responsible for writing the necessary COs for their corresponding course after receiving the department's course (subject) allocation. COs will be created utilizing the action verbs of the various learning levels., CO statements that are relevant to the skills, knowledge and behavior that students will learn during the end of each course should be most specific and quantifiable.





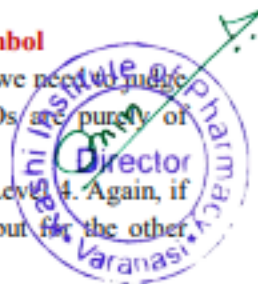
After writing the CO statements, CO will be mapped with PO of the department. If the department is having more than one section in a year the subject expert will be nominated as course coordinator of the corresponding course. The role of the course coordinator is to review the CO statements and the CO-PO mapping which has been done by course in-charge. The year wise coordinator has to consolidate the CO's of the respective year and maintain the documentation of the CO attainment level of the respective year courses as well as documentation of the individual students' extra-curricular and co-curricular activities. These details will hand over to the program coordinator in order to evaluate PO attainment of the individual student as well as individual course at the end of the 8th semester. The Program coordinator has to evaluate the PO attainment of individual student through direct and indirect method after the student completing their program. All these works have to be done under the guidance of Department Advisory Committee (DAC). CO – PO mapping indicates to what extent a certain component (either assessment method to CO or CO to PO or PO to PEO & PSO are correlated to each other. Course correlation matrix shows the **Learning Relationship** (level of learning achieved) between COs and POs of a course. This matrix also strongly indicates whether the students are able to achieve the course outcomes/objectives. All the courses together must cover all the POs and PSOs. For a course we map the COs to POs through the CO-PO matrix and to PSOs through the CO-PSO matrix. The matrix can be used for any course and it is good method to evaluate a course syllabus. The various correlation levels are:

- * **3- indicates Substantial (high) mapping** (high contribution towards attainment)
- * **2- indicates Moderate** (medium) mapping (medium contribution towards attainment)
- * **1- indicates Slight (low) mapping** (some contribution towards attainment)
- * **“-” indicates there is no correlation.**

Procedure followed while assigning the values by Mapping COs to POs:

Judging the importance of the particular COs in relation to the POs.

- If the CO matches strongly with a particular PO criterion then **Assign 3.**
- If it matches moderately then **Assign 2.**
- If the match is low then **Assign 1.**
- If there is no correlation between any CO with PO else mark with **“-” Symbol**
- If an action verb used in a CO is repeated at multiple Blooms levels, then we need to judge which Blooms level is the best fit for that action verb the first five POs are **purely technical** in nature, while the other POs are **non-technical**.
- Writing the COs, we need to restrict yourself between Blooms Level 1 to Level 4. Again, if it is a programming course, restrict between Blooms Level 1 to Level 3 but for the other courses, we can go up to Blooms Level 4.





KASHI INSTITUTE OF PHARMACY

Managed by: JAIN EDUCATION SOCIETY

E-mail: info@kashiit.ac.in. Website: www.kashiip.ac.in 1800-123-321-123

- For the laboratory courses, while composing COs, we need to restrict our self between Blooms Level 1 to Level 5.
- Only for Mini-project and Main project, you may extend up to Blooms Level 6 while composing COs.

Note: * The table given below gives information about the action verbs used in the POs and the nature of POs, stating whether the POs are technical or non-technical. we need to understand the intention of each POs and the Bloom's level to which each of **POs** and the Blooms level to which each of these action verbs in the POs correlates to. Once you have understood the **POs** then you can write the COs for a course and see to what extent each of those COs correlate with the POs.

Table 1: Process for mapping the values for CO-PO Matrix						
Type	POs	Action Verb(s) in POs	Bloom's Level(s) for POs	Blooms Level(s) for COs	Type	Thumb Rule
Technical	PO1	Apply	L3	Blooms L1 to L4 for Theory Courses	Non Technical	PO7 If Blooms L1 Action Verbs of a CO -> Correlates any of PO7 to PO12 -> then Assign 1
	PO2	Identify	L2			
		Formulate	L6			
		Review	L2			
	PO3	Design	L3,L6	Blooms L1 to L5 for Laboratory Courses		PO8 If Blooms L2 to L3 Action Verbs of a CO -> Correlates any of PO7 to PO12 -> then Assign 1
		Develop	L3,L6			
	PO4	Analyze	L4			
		Interpret	L2 , L3			



KASHI INSTITUTE OF PHARMACY

Managed by: JAIN EDUCATION SOCIETY

E-mail: info@kashiit.ac.in. Website: www.kashiip.ac.in 1800-123-321-123

	PO5	Design	L6	Blooms L1 to L6 for Mini Project and Major Project	PO11	If Blooms L4 to L6 Action Verbs of a CO -> Correlates any of PO7 to PO12 -> then Assign 3
		Create	L6			
PO6	Select	L1, L2 L6	PO12			
	Apply	L3				
PO6	Apply	L3	PO12			
	Assess	L5				

CO-PO & PSO MAPPING FOR CO-PO MATRIX: **SAMPLE**

KASHI INSTITUTE OF PHARMACY															
CO-PO & PSO MAPPING															
	PO1	PO2	PO3	PO4	PO5	PO6	PO7	PO8	PO9	PO10	PO11	PO12	PSO1	PSO2	PSO3
CO1	2	0	0	2	-	-	-	-	-	3	2	3	1	2	2
CO2	3	-	-	-	-	-	3	3	3	3	2	2	3	-	2
CO3	3	-	3	2	2	-	2	3	2	3	2	2	2	3	2
CO4	2	1	2	2	-	-	2	2	-	2	-	3	2	2	-
CO5	2	-	-	2	-	-	-	-	-	2	-	2	2	2	-



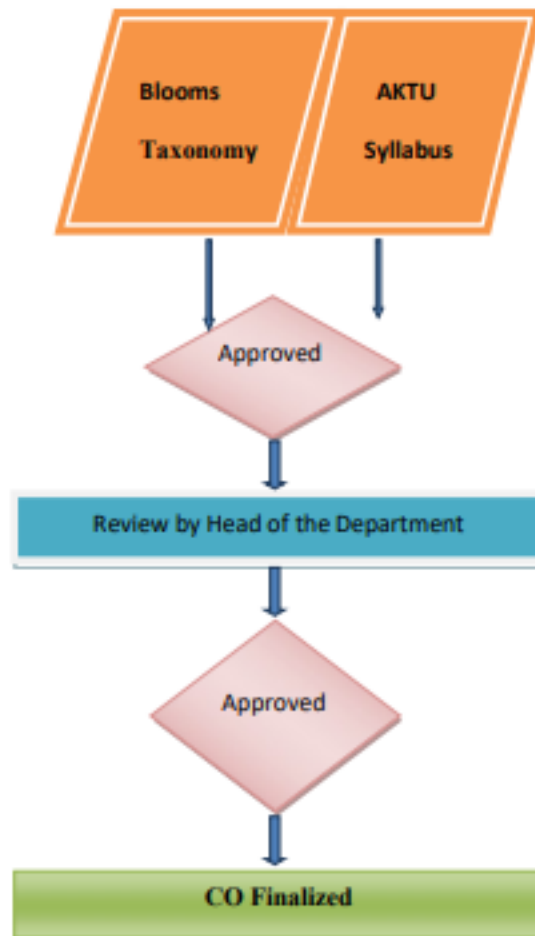


Assessment Process for Calculating The Attainment of Pos and PSO

Assessment process for calculating the attainment of POs and PSOs

Assessment Process for Evaluation of Course Outcomes:

Assessment tools and its frequency, the responsible authority to collect the data and its relevant COs, are tabulated as follows:





KASHI INSTITUTE OF PHARMACY

Managed by: JAIN EDUCATION SOCIETY

E-mail: info@kashiit.ac.in. Website: www.kashiip.ac.in ☎ 1800-123-321-123

Assessment Method & Attainment Level :

Step 1: Obtain Course Outcome.

Step 2: Mapping of CO with PO.

Step 3: Setting weight- age for CO assessment.

Step 4: COs measurement through assessment.

Step 5: Obtain PO attainment table through direct and indirect method.





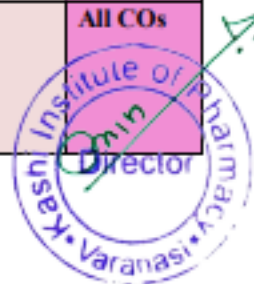
Direct Assessment of COs, POs & PSOs:

(Quality / Relevance of Assessment Process)

Assessment Process for Evaluation of Theory Courses

Assessment Tools and its frequency, the responsible authority to collect the data and its relevant COs, are tabulated in tables.

Assessment Tools	Assessment Period	Assessed By	Reviewed By	Mapping with COs
Class Test -1 Class Test -2 (Pre University Test) (PUT)	Once Per Semester	Course Instructor	Department Advisory committee (DAC)	Relevant CO
Assignments-1	Once Per Semester	Course Instructor	Department Advisory committee (DAC)	CO1
Assignments-2				CO2
Assignments-3				CO3
Assignments-4				CO4
Assignments-5				CO5
Quizzes	Once Per Semester	Course Instructor	Department Advisory committee (DAC)	All COs
University Semester Exam	Once Per Semester	Course Instructor	Department Advisory committee (DAC)	All COs





KASHI INSTITUTE OF PHARMACY

Managed by: JAIN EDUCATION SOCIETY

E-mail: info@kashiit.ac.in. Website: www.kashiip.ac.in 1800-123-321-123

Assessment Process for Evaluation of Laboratory Courses

Assessment Tools	Assessment Period	Assessed By	Reviewed By	Mapping with COs
Lab Experiment	Throughout Semester	Course Instructor	Department Advisory committee (DAC)	All COs
Viva Voce	Throughout Semester	Course Instructor		All COs
Practical Record	Throughout Semester	Course Instructor		All COs
Internal Practical Exam	Once Per Semester	Internal Examiners		All COs
University Semester Exam	Once Per Semester	Internal Examiners appointed by the department & External Examiners Appointed by AKTU		All COs





KASHI INSTITUTE OF PHARMACY

Managed by: JAIN EDUCATION SOCIETY

E-mail: info@kashiit.ac.in. Website: www.kashiip.ac.in 1800-123-321-123

Assessment Process for Evaluation of Project Courses

Assessment Tools		Assessed Period	Assessed By	Reviewed By	Mapping with COs	
Topic Approval		7 th Sem	Project Review committee	Department Advisory committee (DAC)	All COs	
Progress Presentation 1	Presentation Skill	7 th Sem			All COs	
	Viva Voce					
	Implementation report					
	Faculty Interaction					
Progress Presentation 2	Presentation Skill	7 th Sem				All COs
	Viva Voce					
	Implementation report					
	Faculty Interaction					
Internal Final Presentation	Presentation Skill	8 th Sem	Internal Examiners appointed by the department & External Examiners Appointed by AKTU	All COs		
	Viva Voce					
	Implementation report					
	Faculty Interaction					
External Presentation	Presentation Skill	8 th Sem			All COs	
	Viva Voce					
	Implementation report					
	Faculty Interaction					



Address: 23 km Milestone, Varanasi-Prayagraj Road, Mirzamurad, Varanasi- 221307 (U.P.)



KASHI INSTITUTE OF PHARMACY

Managed by: JAIN EDUCATION SOCIETY

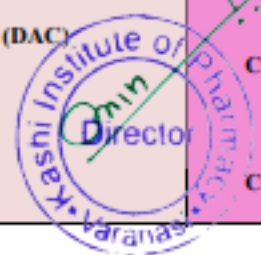
E-mail: info@kashiit.ac.in. Website: www.kashiip.ac.in ☎ 1800-123-321-123

Assessment Process for Evaluation of Seminar Courses & Industrial Training Courses

Assessment Tools		Assessed Period	Assessed By	Reviewed By	Mapping with COs
External Presentation	Presentation Skill Viva Voce Implementation report Faculty Interaction	Once Per Semester	Seminar Review committee	Department Advisory committee (DAC)	All COs

Assessment Process for General Proficiency Course

Assessment Tools	Assessed Period	Assessed By	Reviewed By	Mapping with COs
Sports Event	Throughout the program	Sports Committee	Department Advisory Committee (DAC)	CO1
Cultural Events		Cultural Committee		CO2
Technical Events		Technical Committee		CO3
Societal & Environmental Events		Societal & Environmental Committee		CO4
Discipline		Proctorial Board		CO5





CO Attainment Target Level Methods:

There can be several methods. e.g.

- Same target is identified for all the COs of the course i.e. target can be class average marks $\geq 60\%$ marks.
- Target are same for all COs and are set in terms of performance level of different groups of students. While this method classifies students in to different categories, it does not provide any specific clues to plans for improvements of quality of learning. e.g.

Target			
(% of students getting < 50)	(% of students getting >50 and < 65)	(% of students getting >65 and < 80)	(% of students getting ≥ 80)
10	40	40	10

- Targets are set for each CO of a course separately. It does not directly indicate the distribution of performance among the students. However, it has the advantage of finding out the difficulty of specific COs.

COs	Target (Class Average)
CO1	70%
CO2	80%
CO3	75%
CO4	65%
CO5	80%

Target Level :

- Targets are quantized in to certain level, 3 being the most common number of levels.
- Level 3: If 70% students scoring $\geq 60\%$ of Marks allocated to CO
- Level 2: If 60% student scoring $\geq 60\%$ of Marks in CO
- Level 1: If 50% student scoring $\geq 60\%$ of Marks in CO
- Level 0: If < 50% student scoring $\geq 60\%$ of Marks in CO





KASHI INSTITUTE OF PHARMACY

Managed by: JAIN EDUCATION SOCIETY

E-mail: info@kashiit.ac.in. Website: www.kashiip.ac.in 1800-123-321-123

Aim is to attain Level 3

CO Attainment Calculation:

The course outcomes for all the courses are calculated in terms of percentage using the formula.

$$\text{CO}_x \text{ in } \% = \frac{\text{Marks obtained by the students in CO}_x}{\text{Maximum marks allotted in CO}_x} \times 100$$

Where $x = [1 \text{ to } N]$, $N = \text{Number of COs}$

Each course outcome is calculated for all the students based on marks obtained by the students.

$$\text{CO}_x \text{ Attainment in } \% = \left[\frac{\text{No. of Students scored } \geq 70 \text{ of Marks in CO}_x}{\text{Total No. of students}} \times 100 \right]$$

Where $x = [1 \text{ to } N]$, $N = \text{Number of COs}$

CO Attainment Level is defined based on the following criteria:

Assessment Method	COs Attainment Level	
Internal Assessment	Level 3	If 70% students scoring $\geq 70\%$ of Marks in COs
	Level 2	If 60% student scoring $\geq 70\%$ of Marks in COs
	Level 1	If 50% student scoring $\geq 70\%$ of Marks in COs



KASHI INSTITUTE OF PHARMACY

Managed by: JAIN EDUCATION SOCIETY

E-mail: info@kashiit.ac.in. Website: www.kashiip.ac.in 1800-123-321-123

After calculating the attainment level of each COs from the performance of Internal Assessment Test 1 & 2, the attainment level of Internal Assessment Test is calculated with ratio of sum of all

the COs attained by total number of COs as shown below:

$$\text{IAT Attainment Level} = \frac{\text{Sum of all COs attained by students}}{\text{Total Number of COs}}$$

Where IAT = Internal Assessment Test

IAT is calculated as follows:

$$\text{E.g. Internal Assessment Test} = \frac{\text{CO1} + \text{CO2} + \text{CO3} + \dots + \text{C}}{5}$$

Based on university grade, the attainment level of COs is calculated. The attainment level is decided on the following criteria.

Assessment Method	Cox Attainment Level	
University (External) Assessment	Level 3	If 60% student scoring \geq 50% of Marks in University Exam
	Level 2	If 50% student scoring \geq 50% of Marks in University Exam
	Level 1	If 40% student scoring \geq 50% of Marks in University Exam

The university attainment level is calculated as follows

$$\text{Over all CO Attainment } \textit{Direct} = \left(\frac{\sum \text{CO}_i}{n} \times 0.2 \right) + (\text{UA} \times 0.8)$$

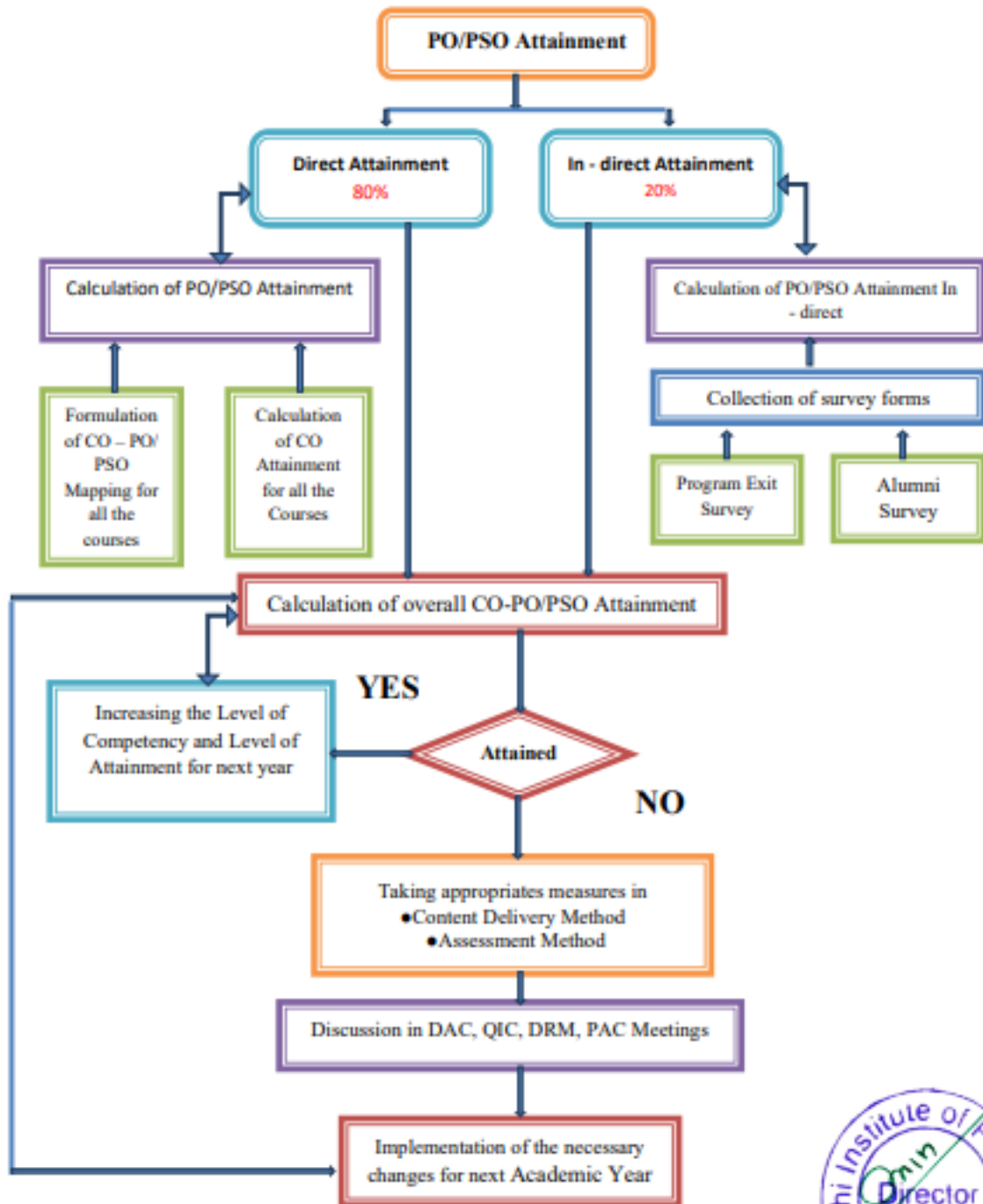
(Where n = Number of course outcome)

Result : Overall CO Attainment =





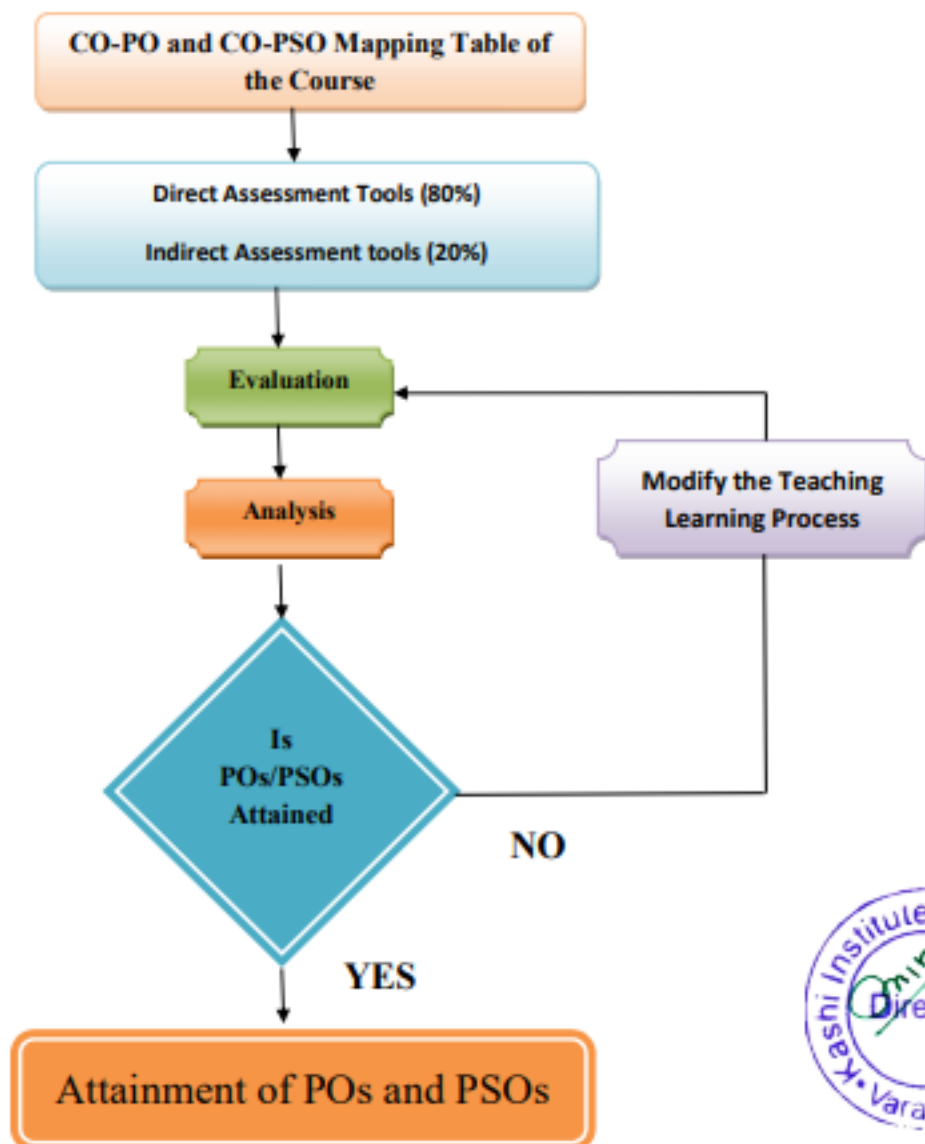
Process for PO/PSO Attainment:





Assessment tools and processes used for measuring the Attainment of each of the Program Outcomes (POs) and Program Specific Outcomes (PSOs):

Evaluation of attainment of POs and PSOs is based on direct and indirect assessment tools. Direct assessment of POs and PSOs is based on student's performance in continuous assessment and university examination. Indirect assessment is based on Program Exit Survey (Theory & Practical). The various direct and indirect tools and its frequency, the responsible authority to collect data for assessing the attainment of each POs and PSOs are given below table.





KASHI INSTITUTE OF PHARMACY

Managed by: JAIN EDUCATION SOCIETY

E-mail: info@kashiit.ac.in. Website: www.kashiip.ac.in 1800-123-321-123

Course level PO & PSO Attainment Calculation:

The PO & PSO attainment for the course is calculated using following formula

PO Attainment of Course (X)

$$= \text{CO Attainment ratio of Course (X)} \times \text{PO}_y \text{ mapping value of course(x)}/100$$

PO Attainment Level of Course (X)

$$= (\text{weighted Average Value of PO} \times \text{CO Attainment Average}) / 3$$

PSO Attainment of Course (X)

$$= \text{CO Attainment ratio of Course (X)} \times \text{PSO}_y \text{ mapping value of course(x)}/100$$

(Where, $y = [1 \text{ to } N]$, $N =$ Number of Program Outcomes)

PSO Attainment Level of Course (X)

$$= (\text{weighted Average Value of PSO} \times \text{CO Attainment Average}) / 3$$

(Where, $y = [1 \text{ to } N]$, $N =$ Number of Program Specific Outcomes)





KASHI INSTITUTE OF PHARMACY

Managed by: JAIN EDUCATION SOCIETY

E-mail: info@kashiit.ac.in Website: www.kashiip.ac.in 1800-123-321-123

KASHI INSTITUTE OF PHARMACY, VARANASI

CO Attainment for End Semester Examination (AKTU 80%)

Semester: 1st Course : B.Pharm

Course Code : BP101

Course Name : Human Anatomy & Physiology-I

Name of the Faculty : Mr. Sachchidanand Pathak

Section : A & B

S. N.	University Roll No.	NAME OF STUDENT	BRANCH	Internal Marks (25)	External Marks (75)	Total Marks (100)	Percentage	Grade Point Obtained
				Marks Obtained	Marks Obtained			
1	2205510500001	ABHAY KUMAR YADAV	Pharmacy	19	34	53	53	D
2	2205510500002	ABHINAV TRIPATHY	Pharmacy	22	24	46	46	F
3	2205510500003	ABHISHEK KUMAR	Pharmacy	21	30	51	51	D
4	2205510500004	ABHISHEK KUMAR CHOUBEY	Pharmacy	20	18	38	38	F
5	2205510500005	ABHISHEK PANDEY	Pharmacy	22	32	54	54	D
6	2205510500006	ADITYA KUMAR	Pharmacy	19	33	52	52	D
7	2205510500007	ADITYA VISHWAKARMA	Pharmacy	19	27	46	46	F
8	2205510500008	AKASH CHOUBEY	Pharmacy	20	41	61	61	D
9	2205510500009	AKASH SINGH	Pharmacy	20	39	59	59	D
10	2205510500010	ALOK SHARMA	Pharmacy	21	29	50	50	D



Address: 23 km Milestone, Varanasi-Prayagraj Road, Mirzamurad, Varanasi- 221307 (U.P.)



KASHI INSTITUTE OF PHARMACY

Managed by: JAIN EDUCATION SOCIETY

E-mail: info@kashiit.ac.in. Website: www.kashiip.ac.in 1800-123-321-123

11	2205510500011	AMAN KUMAR YADAV	Pharmacy	19	11	30	30	F
12	2205510500012	AMAN TRIPATHI	Pharmacy	21	60	81	81	A
13	2205510500013	ANCHAL MISHRA	Pharmacy	23	54	77	77	B
14	2205510500014	ANMOL KUMAR	Pharmacy	23	40	63	63	C
15	2205510500015	ANSH PANDEY	Pharmacy	20	39	59	59	D
16	2205510500016	ANSHIK JAIN	Pharmacy	21	41	62	62	C
17	2205510500017	ANUBHAV SINGH	Pharmacy	20	40	60	60	C
18	2205510500018	ANURAG KUMAR	Pharmacy	22	47	69	69	C
19	2205510500019	ARYAN KUMAR	Pharmacy	23	51	74	74	B
20	2205510500020	ASHISH YADAV	Pharmacy	22	51	73	73	B
21	2205510500021	ASHUTOSH SINGH	Pharmacy	21	36	57	57	D
22	2205510500022	ASHWANI SINGH	Pharmacy	20	35	55	55	D
23	2205510500023	ATUL KUMAR	Pharmacy	20	41	61	61	C
24	2205510500024	AVATANSH MISHRA	Pharmacy	19	34	53	53	D
25	2205510500025	AVINASH YADAV	Pharmacy	20	49	69	69	C
26	2205510500026	AVIRAL ARYA	Pharmacy	20	35	55	55	D
27	2205510500027	AYUSH CHAURASIYA	Pharmacy	19	26	45	45	F
28	2205510500028	AYUSH KUMAR SRIVASTAVA	Pharmacy	24	49	73	73	B
29	2205510500029	AYUSH MISHRA	Pharmacy	20	35	55	55	D
30	2205510500030	AYUSH PRATAP SINGH	Pharmacy	19	37	56	56	D
31	2205510500031	DEEP DEV	Pharmacy	22	55	77	77	B
32	2205510500032	DHAWAL SONI	Pharmacy	19	28	47	47	F
33	2205510500033	DIVYANSHU SHARMA	Pharmacy	21	28	49	49	F
34	2205510500034	EKTA YADAV	Pharmacy	22	55	77	77	B
35	2205510500035	HARSH DEV SINGH	Pharmacy	21	33	54	54	D

Address: 23 km Milestone, Varanasi-Prayagraj Road, Mirzamurad, Varanasi- 221307 (U.P.)



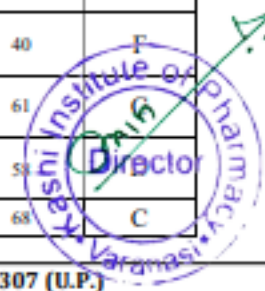
KASHI INSTITUTE OF PHARMACY

Managed by: JAIN EDUCATION SOCIETY

E-mail: info@kashiit.ac.in. Website: www.kashiip.ac.in 1800-123-321-123

36	2205510500036	HARSH KUMAR MODANWAL	Pharmacy	19	24	43	43	F
37	2205510500037	HEMRAJ KUMAR	Pharmacy	20	40	60	60	C
38	2205510500038	HITESH TRIPATHI	Pharmacy	19	24	43	43	F
39	2205510500039	JAGRITI MAURYA	Pharmacy	22	31	53	53	D
40	2205510500040	KAJAL YADAV	Pharmacy	20	38	58	58	D
41	2205510500041	KANOJIYA ROHIT MAHENDRAPR ATAP	Pharmacy	22	42	64	64	C
42	2205510500042	KHUSHBOO YADAV	Pharmacy	21	54	75	75	B
43	2205510500043	KISHNAKANT SINGH CHAUHAN	Pharmacy	20	40	60	60	C
44	2205510500044	KRISHNA NAND SHARMA	Pharmacy	21	41	62	62	C
45	2205510500045	KUMAR SAHIL	Pharmacy	19	49	68	68	C
46	2205510500046	KUNWAR PRATAP SINGH	Pharmacy	22	56	78	78	B
47	2205510500047	MADHU SINGH	Pharmacy	21	48	69	69	C
48	2205510500048	MANGESH VISHWAKARMA	Pharmacy	21	31	52	52	D
49	2205510500049	MAYANK MISHRA	Pharmacy	19	37	56	56	D
50	2205510500050	MAYANK MISHRA	Pharmacy	19	38	57	57	D
51	2205510500051	MO. ARMAN SHEKH	Pharmacy	20	25	45	45	F
52	2205510500052	MOHD. TAUSIF KHAN	Pharmacy	24	62	86	86	A
53	2205510500053	NANDANI KUSHWAHA	Pharmacy	19	30	49	49	F
54	2205510500054	NIHARIKA UPADHYAY	Pharmacy	19	38	57	57	D
55	2205510500055	NISHANT TIWARI	Pharmacy	20	20	40	40	F
56	2205510500056	PAL SONI OMPRAKASH	Pharmacy	20	41	61	61	C
57	2205510500057	PIYUSH PATEL	Pharmacy	22	36	58	58	D
58	220551050	PRACHI SINGH	Pharmacy	20	48	68	68	C

Address: 23 km Milestone, Varanasi-Prayagraj Road, Mirzamurad, Varanasi- 221307 (U.P.)





KASHI INSTITUTE OF PHARMACY

Managed by: JAIN EDUCATION SOCIETY

E-mail: info@kashiit.ac.in. Website: www.kashiip.ac.in 1800-123-321-123

	0058	VERMA	cy					
59	2205510500059	PRAJVAL PANDEY	Pharmacy	22	41	63	63	C
60	2205510500060	PRASHANT KUMAR YADAV	Pharmacy	20	62	82	82	A
61	2205510500061	PRATHAM JAISWAL	Pharmacy	20	34	54	54	D
62	2205510500062	PRAVEEN SINGH	Pharmacy	21	49	70	70	B
63	2205510500063	PRINCE MISHRA	Pharmacy	20	33	53	53	D
64	2205510500064	PRINCE VERMA	Pharmacy	19	30	49	49	F
65	2205510500065	PRIYANSHU PANDEY	Pharmacy	22	25	47	47	F
66	2205510500066	RAGINI SINGH	Pharmacy	22	36	58	58	D
67	2205510500067	RAHUL SINGH	Pharmacy	20	37	57	57	D
68	2205510500068	RAJ MISHRA	Pharmacy	20	33	53	53	D
69	2205510500069	RAJU KUMAR	Pharmacy	21	32	53	53	D
70	2205510500070	RAKESH KUMAR GUPTA	Pharmacy	19	42	61	61	C
71	2205510500071	RAMAN KUMAR	Pharmacy	19	9	28	28	F
72	2205510500072	RAVI PRAKASH TIWARI	Pharmacy	19	33	52	52	D
73	2205510500073	RISHAB PRAVESH GUPTA	Pharmacy	20	42	62	62	C
74	2205510500074	RITESH KUMAR YADAV	Pharmacy	20	30	50	50	D
75	2205510500075	SACHIN KUMAR SONI	Pharmacy	20	36	56	56	D
76	2205510500076	SANJEEV KUMAR	Pharmacy	20	33	53	53	D
77	2205510500077	SANTOSH GUPTA	Pharmacy	19	20	39	39	F
78	2205510500078	SATYAM SINGH	Pharmacy	22	35	57	57	D
79	2205510500079	SATYAM TIWARI	Pharmacy	23	40	63	63	C
80	2205510500080	SAUMYA PANDEY	Pharmacy	19	40	59	59	D
81	2205510500081	SHIVAM TIWARI	Pharmacy	20	36	56	56	D
82	2205510500082	SHRESHTHI SINGH	Pharmacy	20	34	54	54	D



Address: 23 km Milestone, Varanasi-Prayagraj Road, Mirzamurad, Varanasi- 221307 (U.P.)

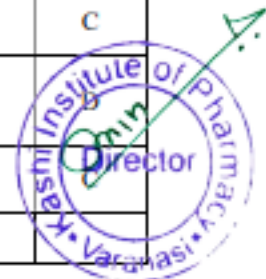


KASHI INSTITUTE OF PHARMACY

Managed by: JAIN EDUCATION SOCIETY

E-mail: info@kashiit.ac.in. Website: www.kashiip.ac.in 1800-123-321-123

83	2205510500083	SHREYA GUPTA	Pharmacy	19	26	45	45	F
84	2205510500084	SHRIKANT	Pharmacy	21	14	35	35	F
85	2205510500085	SHUBHAM GUPTA	Pharmacy	20	32	52	52	D
86	2205510500086	SHUBHAM PANDEY	Pharmacy	22	47	69	69	C
87	2205510500087	SUGANDH KUMAR CHOUDHARY	Pharmacy	20	39	59	59	D
88	2205510500088	SUJATA SINGH	Pharmacy	21	42	63	63	C
89	2205510500089	SUPRIYA RAI	Pharmacy	20	40	60	60	C
90	2205510500090	SURAJ PAL	Pharmacy	21	47	68	68	C
91	2205510500091	SURUCHI KUMARI	Pharmacy	20	51	71	71	B
92	2205510500092	TRIPTI SHARMA	Pharmacy	20	48	68	68	C
93	2205510500093	UDAY SINGH GANDHI	Pharmacy	20	34	54	54	D
94	2205510500094	UJJAVAL CHAUHAN	Pharmacy	21	45	66	66	C
95	2205510500095	UTKARSH SINGH	Pharmacy	20	30	50	50	D
96	2205510500096	VAIBHAV MISHRA	Pharmacy	19	27	46	46	F
97	2205510500097	VARAD SINGH	Pharmacy	19	34	53	53	D
98	2205510500098	VARCHSVA SISODIYA	Pharmacy	19	18	37	37	F
99	2205510500099	VIKASH YADAV	Pharmacy	23	53	76	76	B
100	2205510500100	VINIT YADAV	Pharmacy	17	41	58	58	D
101	2205510500101	VIPIN KUMAR VERMA	Pharmacy	19	27	46	46	F
102	2205510500102	VISHAL PANDEY	Pharmacy	20	24	44	44	F
103	2205510500103	VISHAL YADAV	Pharmacy	21	42	63	63	C
104	2205510500104	YADAV ADITYA MAHENDRA	Pharmacy	22	32	54	54	
105	2205510500105	YOGESH MISHRA	Pharmacy	21	42	63	63	



Address: 23 km Milestone, Varanasi-Prayagraj Road, Mirzamurad, Varanasi- 221307 (U.P.)



KASHI INSTITUTE OF PHARMACY

Managed by: JAIN EDUCATION SOCIETY

E-mail: info@kashiit.ac.in. Website: www.kashiip.ac.in 1800-123-321-123

Total Number Of Student	105
Number of Students Secured ≥ 50 % Marks	83
% of Students Attained	79
Attainment Level	3

Gap Analysis				
Achieved Attainment %	Target Attainment %	Target in Level	Attainment Level	Gap = Target in level - Attainment in level
79	Target Attainment ≥ 50 %	3	3	0
Action Taken Report				
COs	Action Taken			
CO1, CO2, CO3, CO4, CO5	Attained			

Action taken for identified Gap (For Next Semester)
*Students are encouraged to Enrol Value added program/NPTEL online certification course and to appear for certification exam.
*Remedial Classes will be conducted.
*Bridge classes for units.
*Assignments for critical topic.
*Solution for university question for unit.





KASHI INSTITUTE OF PHARMACY

Managed by: JAIN EDUCATION SOCIETY

E-mail: info@kashiit.ac.in. Website: www.kashiip.ac.in 1800-123-321-123

Rationale :

1- Since question wise students marks are not provided by affiliating university these marks are kept separate. If results are available with question wise marks **COs** wise analysis might have been done .

2- As we expect that each student must at least get 50% marks and he/ she may secure with pass percentage.

% of Marks Secured in a Subject / Course	Letter Grade (AKTU Guidelines)	LEVEL	Grade Points
≥ 90	O	(Outstanding)	10
< 90	A	(Excellent)	9
< 80, ≥ 70	B	(Good)	8
< 70, ≥ 60	C	(Fair)	7
< 60, ≥ 50	D	(Average)	6
< 50	F	(Fail)	0
Absent	F	(Fail)	0

Target / Threshold Level & Attainment Level

If 60% Students Scoring ≥50% Marks	If 50% Students Scoring ≥50% Marks	If 40% Students Scoring ≥50% Marks
Attainment Level - 3 (H)	Attainment Level - 2 (M)	Attainment Level - 1 (L)

